



# 69037

©2022 Bestway Inflatables & Material Corp.

All rights reserved/Tous droits réservés/Todos los derechos reservados/Alle Rechte vorbehalten/Tutti i diritti riservati

Trademarks used in some countries under license from/

Marques utilisées dans certains pays sous la licence de/

Marcas comerciales utilizadas en algunos países bajo la licencia de/

Die Warenzeichen werden in einigen Ländern verwendet unter Lizenz der/

Marchi utilizzati in alcuni paesi concessi in licenza a

**Bestway Inflatables & Material Corp., Shanghai, China**

Manufactured, distributed and represented in the European Union by/

Fabriqués, distribués et représentés dans l'Union Européenne par/Fabricado, distribuido y representado en la Unión Europea por/

Hergestellt, vertrieben und in der Europäischen Union vertreten von/Prodotto, distribuito e rappresentato nell'Unione Europea da

**Bestway Europe S.p.a., Via Resistenza, 5, 20098 San Giuliano Milanese (Milano), Italy**

Distributed in Latin America by/Distribué en Amérique latine par/Distribuido en Latinoamérica por/Distribuido na América Latina por

**Bestway Central & South America Ltda, Salar Ascotan 1282, Parque Enea, Pudahuel, Santiago, Chile**

Distributed in Australia & New Zealand by **Bestway Australia Pty Ltd, Unit 2/98-104 Camarvon St Silverwater, NSW 2128, Australia**

Tel: Australia: (+61) 2 9037 1388; New Zealand: 0800 142 101

Distributed in United Kingdom by **Bestway Corp UK Ltd, 8 Wentworth Road, Heathfield Industrial Estate, Newton Abbot, Devon, TQ12 6TL**

Exported by/Exporté par/Exportado por/Exportiert von/Esportato da

**Bestway (Hong Kong) International Ltd./Bestway Enterprise Company Limited**

Suite 713, 7/Floor, East Wing, Tsim Sha Tsui Centre, 66 Mody Road, Kowloon, Hong Kong

[www.bestwaycorp.com](http://www.bestwaycorp.com)

# OWNER'S MANUAL

## AlwaysAire™ Airbed with Built-in AC Pump

EXCLUSIVELY DESIGNED FOR AIR BEDS  
DUAL FUNCTION: INFLATION & DEFLATION

Max load: 69037:350kg/772lbs.

Rating: 220-240V~, 50/60Hz, 139W.

### WARNING

1. If the supply cord is damaged, it must be replaced by the manufacturer, its service agent or similarly qualified persons in order to avoid a hazard.
2. Motor for short time operation only. Inflate only for 5 minutes and deflate only for 5 minutes. Make sure motor's run time at a time not exceeds 5 minutes.
3. The air vent on the cover should be kept free of debris during use.
4. Product must be stored in a dry location.
5. **WARNING** - This appliance can be used by children aged from 8 years and above and persons with reduced physical, sensory or mental capabilities or lack of experience and knowledge if they have been given supervision or instruction concerning use of the appliance in a safe way and understand the hazards involved. Children shall not play with the appliance. Cleaning and user maintenance shall not be made by children without supervision.
6. **CAUTION:** There are risks when you use the article in the open and/or in water. Keep away from fire.
7. **NOTE:** To avoid the risk of electric shock, do not expose to water or rain.
8. The airbed is not a toy, children should be supervised to ensure that they do not play with airbed/valve.

**NOTE:** This product is not intended for commercial use.

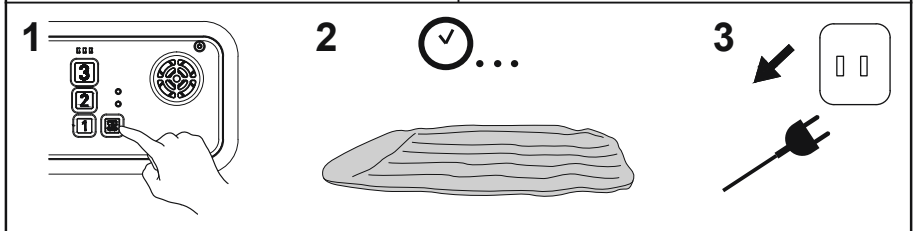
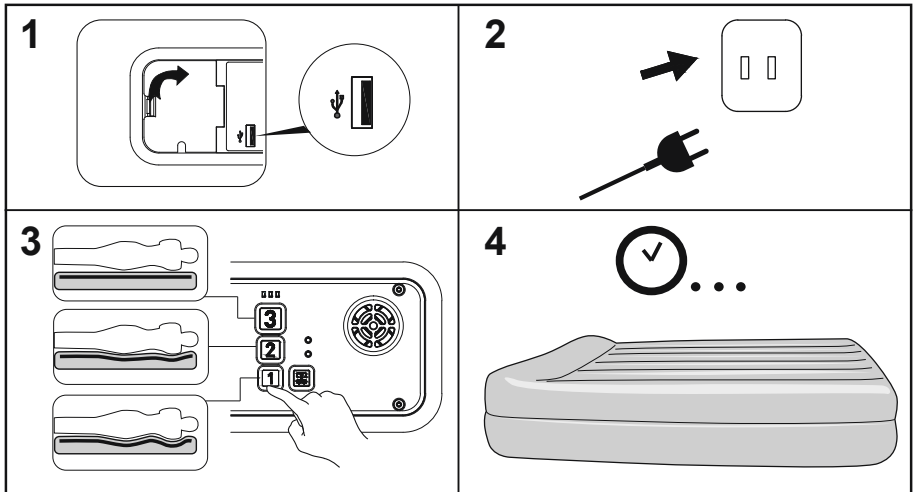
**NOTE:** Drawings for illustration purpose only. May not reflect actual product. Not to scale.

**NOTICE:** Read the instructions completely and save these instructions. Retain this booklet for future reference.

### PUMP DISPOSAL:



Waste electrical products should not be disposed of with household waste. Please recycle where facilities exist. Check with your local authority or retailer for recycling advice.



● — Green light: Inflation completed, reach the desired pressure;  
Green light flashing: Alarm - Can not reach the desired pressure within 5 min.

● — Blue light: Inflating or Deflating;  
Blue light flashing: Manual Deflating.

Auto-Deflation: Press deflation button for 3 seconds.  
Manual-Deflation: If air bed is not deflated completely, press the deflation button more than 4 seconds and holding it will cause the pump to go into a manual-deflation state (with the blue LED flash), which has a 30-second Auto-off feature.

USB port.  
Specification: DC 5V 1A  
The USB port can be powered when the pump plugs into the socket.

**NOTE:** When all 3 power buttons are flashing this indicates one of two things: 1) The power is on, or 2) The power has been off and is now reconnected to a power source. This pump has an auto-re-inflation feature. Please keep the pump plugged in and make sure the green light is on to maintain the air pressure level that you choose.

**NOTE:** Pressing the deflation button anytime will stop the pump when it is in use.

**ALARM:** When the green LED flashes, this means the pump can not reach the desired pressure after inflating over 5 min. Please follow steps below.

1. Check if there is any air leakage and ensure the air valve is closed. Unplug and re-start the air pump.
2. If the problem continues, please manually deflate the airbed following the below steps:
  - Press the deflation button for more than 4 seconds and hold.
  - Or press the deflation button once to open the air valve in the pump and then deflate by pressing the air out of the airbed. Then contact our After Sales Service Center.

