

LED Lighting Fixture



✓ Energy efficiency rating: F

✓ Mounting via magnet or screws possible

✓ Compact design

✓ 2 different sensor modes

Abstract

LED Lighting Fixture, with switch for automatic door mode or touch mode (sensor)

Features

- Compact design and flexible usage via magnet strip (285mm)
- M2.5 screws allow easy installation when magnet is not used
- No heat production
- Two different modes: Automatic door mode ("Blocking type") or touch mode ("waving type")
- Nominal input voltage: 100-240 V
- Input frequency: 50/60 Hz 0.25A
- Operating voltage: DC 12 V 1000 mA 12W
- Rated wattage: 3,3 W
- Control: IR Sensor
- Power adapter plug: CEE 7/16 (Type C) Europlug
- LED DC Input connector: 3.5 mm/1.5 m length
- Maximum total current draw: 250 mA @ 220-240 V
- Central lumen: 223 lm
- Color temp: 6500K LED
- Start-up time until 60% of max. luminous flux has been reached: <1 sec.
- Dimensions (H x W x D): 10 x 300 x 29 mm
- Shipping dimensions (H x W x D): 80 x 310 x 43 mm
- Weight: 172.7 g (net), 237.6 g (gross)
- Consumption in kWh/1000 h: 0.003 kWh
- Durability in hours: 30.000 hours
- Elevation (above MSL) operating storage: 0-3000 m / 0-15000 m
- Storage-/Operation temperature: -25 °C to +65 °C / -20 °C to +45 °C
- Humidity operating storage: 0-95% RH Non-condensing 0-95% RH Non-condensing
- Aluminum housing
- Color: Black plastic & grey aluminum
- Safety class: IP20
- CE & RoHS compliant



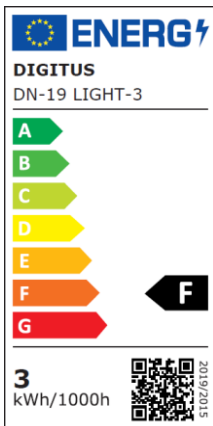
Product Overview

The LED Lighting Fixture is flexible usable due to its compact design and the mounting with a magnet strip. It can be mounted horizontally or vertically inside of your 482.6 mm (19") cabinet and ensures an optimized lighting via efficient LED lights, which have the maximum light power from the beginning, without warming phase. The two different modes (adjustable with a switch) offer a particularly user-friendly handling. The automatic door mode will switch on the light, due to the sensor, automatically when you open the door of your 482.6 mm (19") cabinet and also switch off the light when the door is being closed. Alternatively, you can use the touch mode for manual use. In this case just wave in front of the sensor one time for switching on the light and a second time to switch off the light. A power adapter is included in the standard delivery content; therefore, the LED Lighting Fixture is usable immediately.

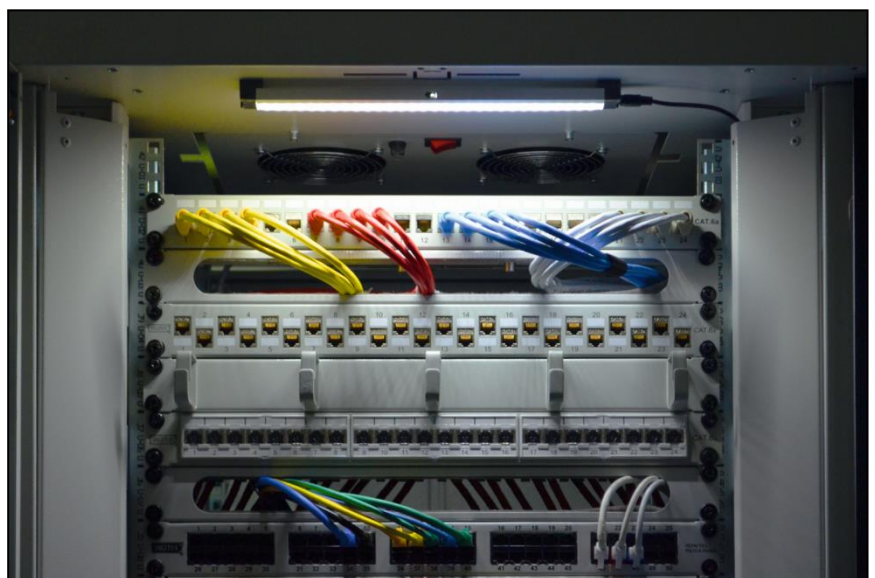
Product Number Information

DN-19 LIGHT-3 LED lighting fixture, magnetic, 200 lm, two sensor modi, incl. power adapter

Product Images



Examples of Application

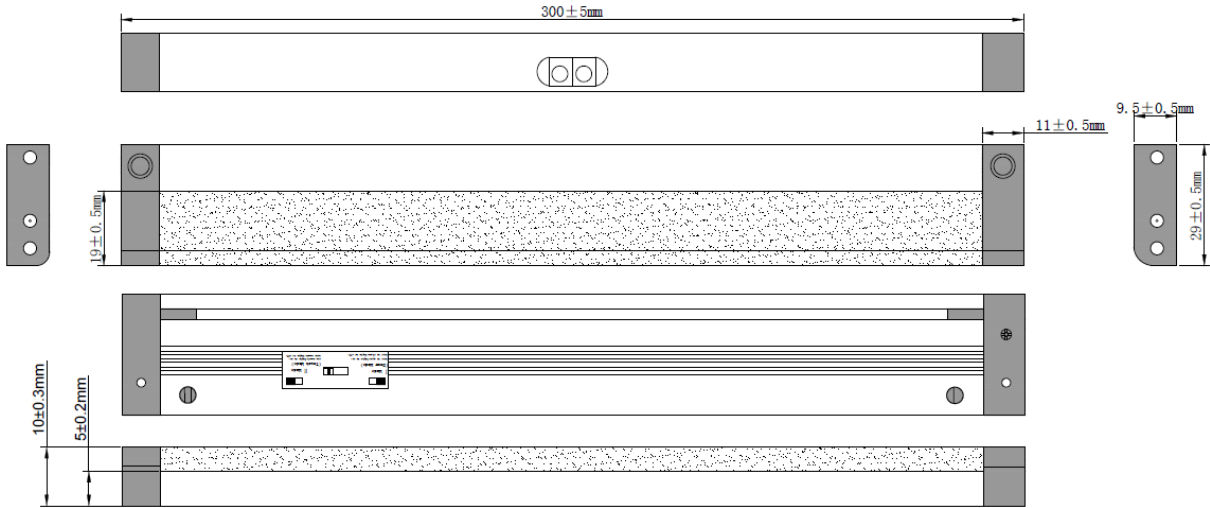


Product Video

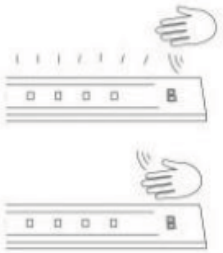
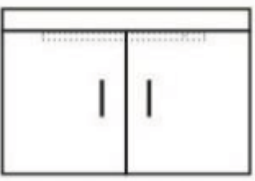
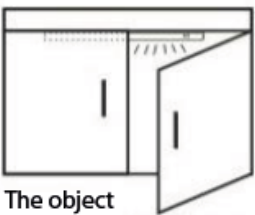
View a product video of “DN-19 LIGHT-3” on the official DIGITUS® YouTube Channel (when using this PDF on a computer, smartphone or tablet, please click on the YouTube logo below. Alternatively you can also scan the QR code below):



Technical Drawings



Explanation of Sensor Modes

	<p>Wave on IR sensor for 1st time, lamp on.</p> <p>Wave for 2nd time, lamp off.</p>		
<p>Waving type</p>	<p>Blocking type</p>	<p>The object blocks the IR sensor, lamp off.</p>	<p>The object leaves the IR sensor, lamp on.</p>