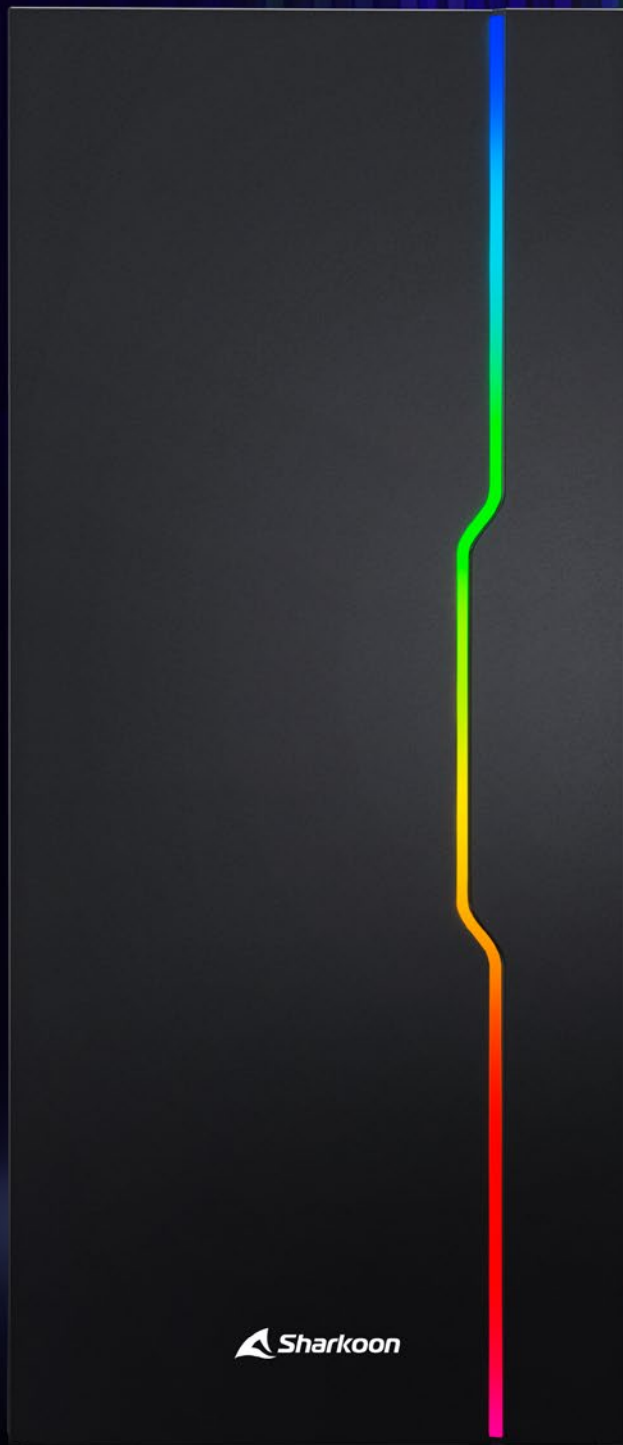


 **Sharkoon**



ATX PC CASE

RGB SLIDER



TEMPERED
GLASS
SIDE
PANEL

2x
USB 3.0
19-PIN CONNECTOR

14
MODES
ADDRESSABLE RGB
CONTROLLER

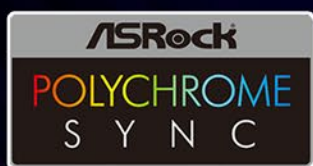
UP TO
33.5
cm
GRAPHICS CARDS

The RGB Slider is a compact midi-ATX case with a sleek look. While the PC case focuses on the essentials, it still has some advantages to offer which set it apart from other cases in its class. Thanks to the black finish and its simple form, it is pleasantly discreet and unassuming. However, the case also has highlights such as the side panel made of tempered glass, the I/O panel with two USB 3.0 ports, and the RGB LED strip integrated in the front panel. If the manual color control is used, the strip can be lit in 14 different lighting modes. Additional lighting elements can also be added and customized via the built-in RGB controller. When it comes to internal installation options, the RGB Slider also offers more than meets the eye.

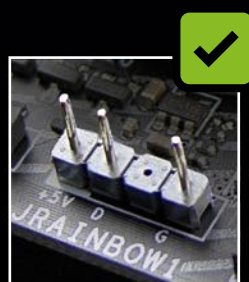
SIMPLE YET STYLISH FRONT PANEL

The matte black front panel of the case is decorated with an RGB LED strip which complements the minimalist look with flowing, luminescent colors. The strip appears to be gently sliding across its middle, which is where the case gets its name, and can be illuminated in 14 preset modes via the integrated RGB controller. Alternatively, it can be customized through compatible mainboards, using Asus Aura Sync, MSI Mystic Light Sync, Gigabyte Fusion and ASRock Polychrome SYNC. The built-in RGB controller also makes it possible to use additional RGB components which have a 5V-D-coded-G or 5V-D-G pinout.

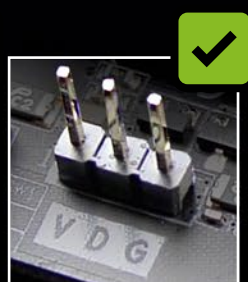
The RGB Slider case, along with all other Sharkoon products marked with the "ADDRESSABLE RGB" logo, are certified for Asus Aura Sync, MSI Mystic Light Sync, Gigabyte Fusion and ASRock Polychrome SYNC. These products are thus easy to incorporate into existing systems.



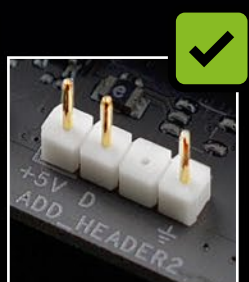
Sharkoon products marked with the "ADDRESSABLE RGB" logo are compatible with mainboards which have headers for addressable RGB LED fans and strips. The headers should have the pin configuration 5V-D-coded-G or 5V-D-G. Examples of these RGB connections from the most important mainboard manufacturers are shown below. The RGB pin configuration is independent of manufacturer. However, the naming and marking of these connections may vary between manufacturers. For further information concerning compatibility, refer to the manual of your mainboard, or visit the manufacturer's website.



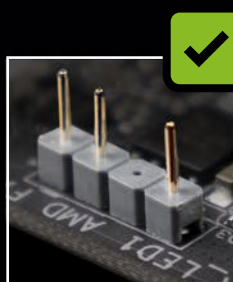
MSI



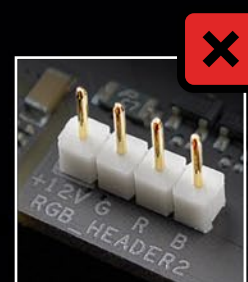
GIGABYTE



ASUS

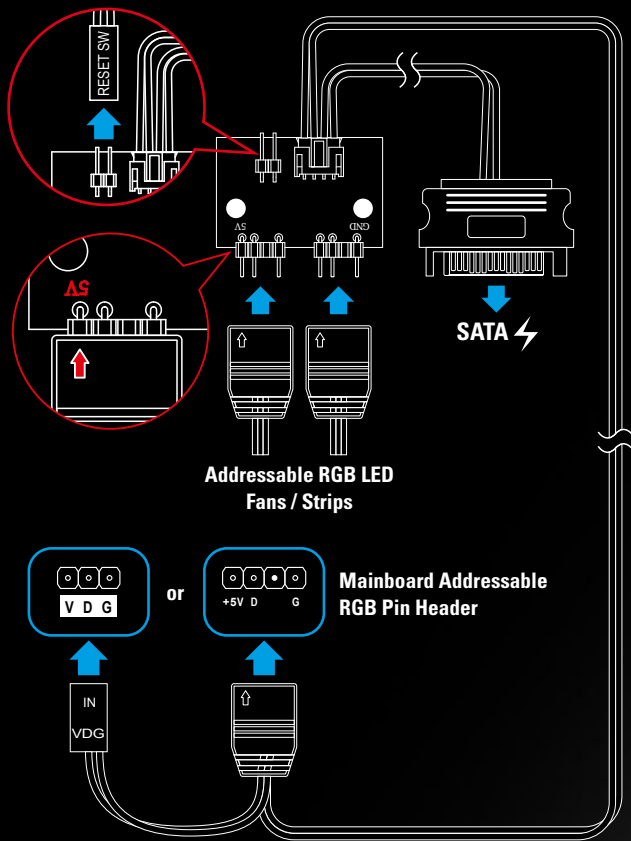


ASROCK



ASUS

2-PORT ADDRESSABLE RGB CONTROLLER

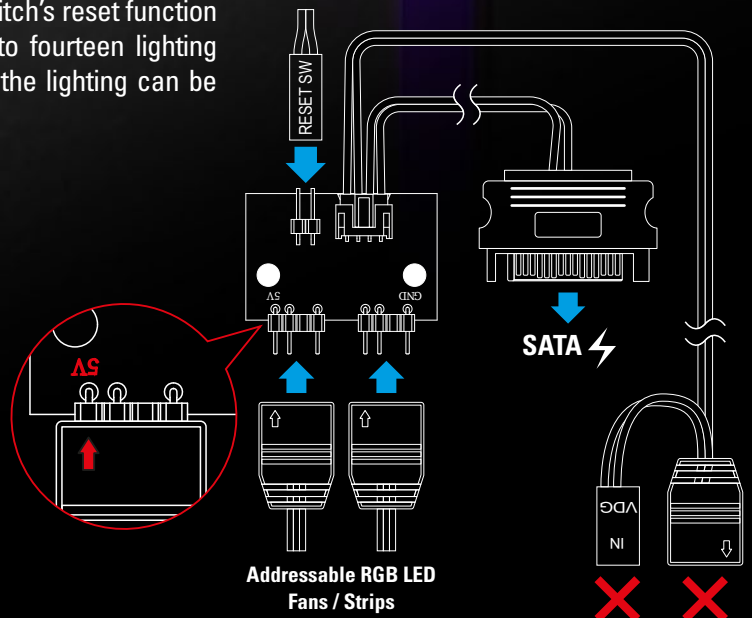
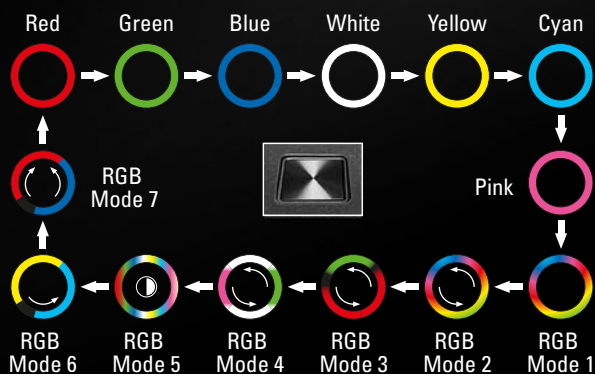


The RGB Slider comes with a preinstalled addressable RGB controller. With compatible mainboards, this will function as a hub for controlling and synchronizing up to two addressable LED components, which will illuminate in up to 16.8 million colors. The controller is connected to the power supply via a SATA connector and to a mainboard via a 4-pin or 3-pin header for addressable LEDs with the pinout: 5V-D-coded-G or V-D-G.



MANUAL COLOR CONTROL

The RGB Slider also has a manual color control function for mainboards which do not have headers for addressable LED components. With this, the RGB controller is not connected to the mainboard, but rather connected to the power supply and the reset switch of the PC case. The switch's reset function is then replaced with a new function which allows up to fourteen lighting modes to be cycled through and selected, or, if desired, the lighting can be turned off.

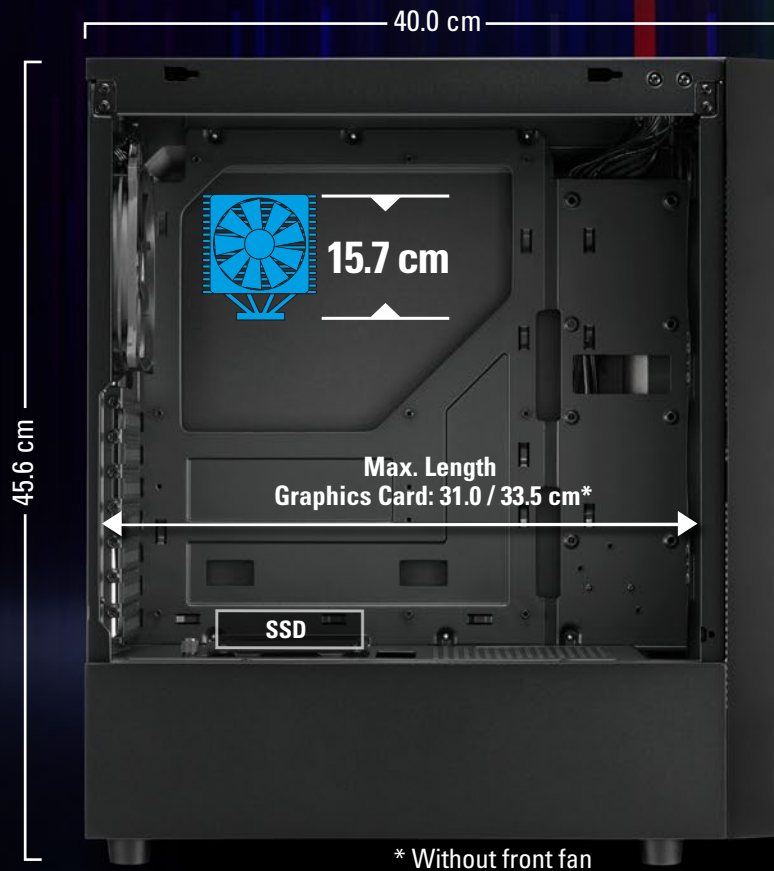


A CRYSTAL-CLEAR PRESENTATION FOR HARDWARE

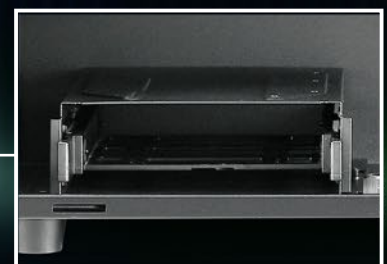
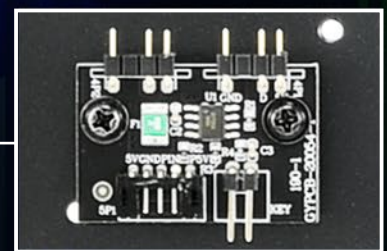
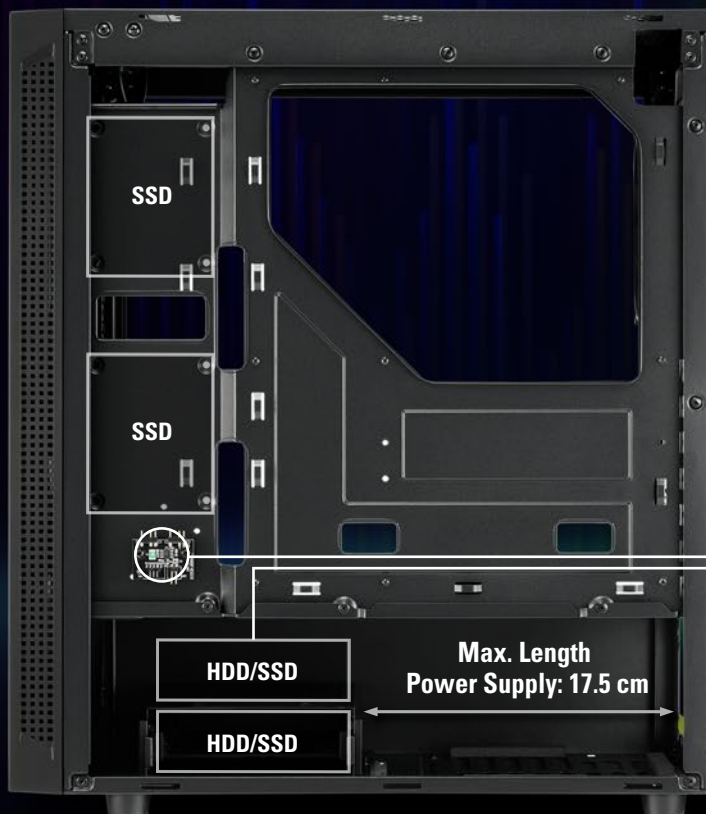


An unobstructed view of the installed hardware is possible through the left side. This is ensured by the side panel of the case, which is made entirely of tempered glass. Your own build can thus be properly showcased inside the minimalist case. So that nothing obscures the view, and the built-in components come into their own, there are no visible screws on the side panel. The attachment is at the rear of the case and therefore out of the field of view.

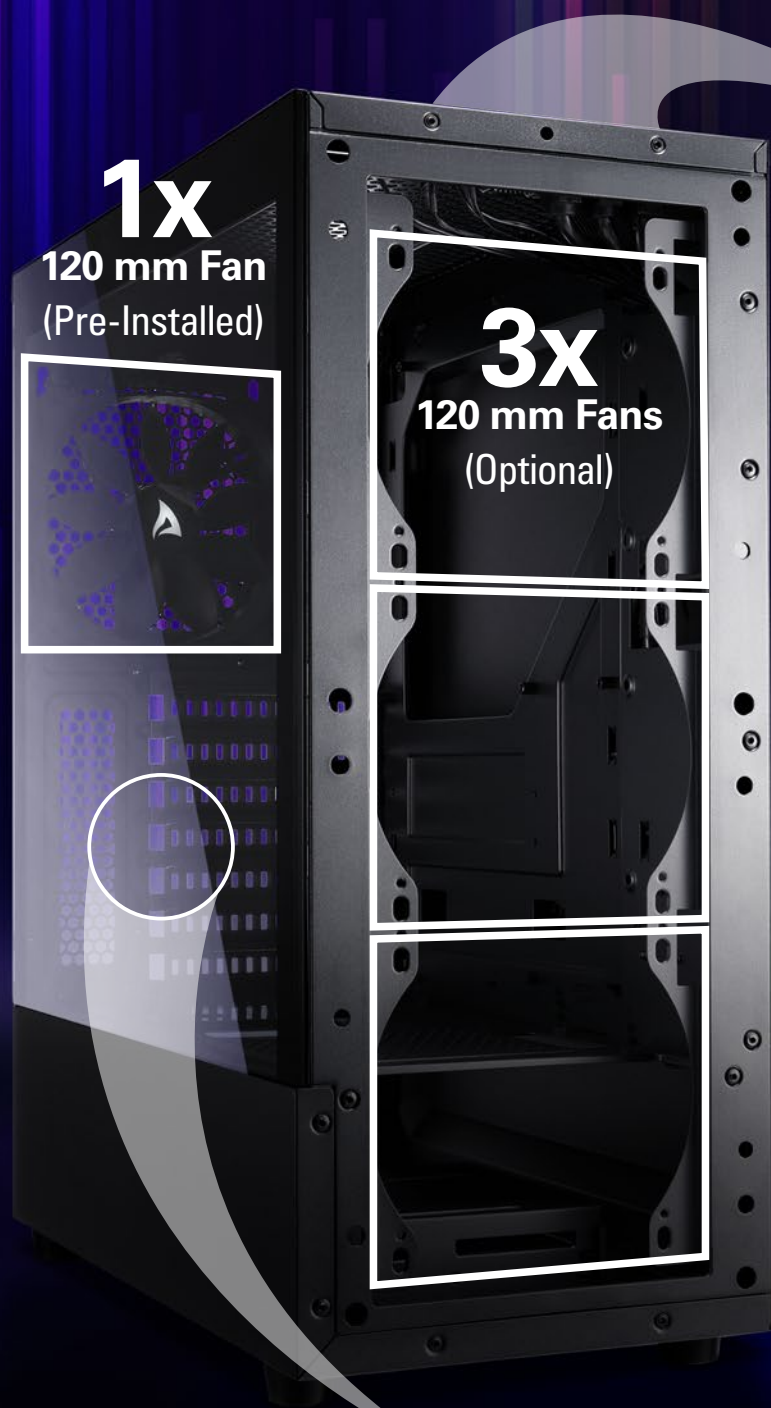
SUITABLE FOR LARGER HARDWARE COMPONENTS



With its compact size, the RGB Slider can be easily integrated into smaller setups or ones that are kept intentionally minimalist. Nevertheless, larger hardware components can also be easily installed in the case. The CPU cooler can be up to 15.7 cm in size, which leaves enough space for graphics cards up to 33.5 cm long.



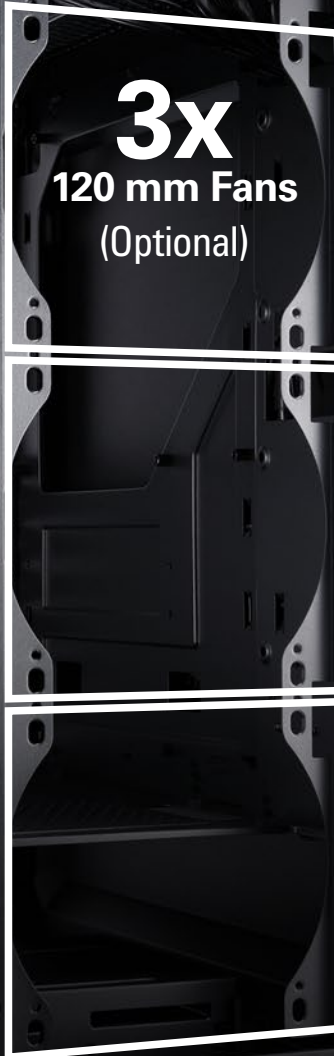
OPTIMAL AIR INTAKE POSSIBILITIES



1x
120 mm Fan
(Pre-Installed)



3x
120 mm Fans
(Optional)



2x 120 mm Fans (Optional) or
2x 140 mm Fans (Optional)



Magnetic, Easy-to-Clean
Dust Filter on Top Panel



Removable Dust Filter
on the Bottom Panel



Easily Accessible Top I/O
Ports above Front Panel

Tempered Glass

The RGB Slider is designed to offer sufficient installation possibilities to ensure optimal airflow. A 120 mm fan is pre-installed at the back of the case, ready to discharge warm air outside. If desired, more fans can be installed within the case: There is room behind the front panel for up to three optional 120 mm fans. Two 120 mm fans or two larger 140 mm fans can also be installed under the top panel. A 120 mm fan can also be installed on the tunnel to further cool the storage drives.

SPECIFICATIONS

General:

■ Form Factor:	ATX
■ Expansion Slots:	7
■ Interior Painting:	✓
■ Tool-Free Devices Installation:	✓
■ Cable Management System:	✓
■ Side Panel:	Tempered Glass
■ Weight:	4.85 kg
■ Dimensions (L x W x H):	40.0 x 19.0 x 45.6 cm

RGB Compatibility:

■ Type:	Addressable
■ Ports:	2
■ Manual Control:	14 Modes
■ Mainboard Compatibility:	MSI Mystic Light Sync, ASUS Aura Sync, Gigabyte RGB Fusion Ready, ASRock Polychrome SYNC
■ RGB Pinout:	5V-D-G & 5V-D-coded-G

I/O:

■ USB 3.0 (Top):	2
■ USB 2.0 (Top):	1
■ Audio (Top):	✓

Maximum Drive Bays:

■ 3.5":	2
■ 2.5":	5

Fan Configuration:

■ Front Panel:	3x 120 mm Fans (Optional)
■ Rear Panel:	1x 120 mm Fan (Pre-Installed)
■ Top Panel:	2x 120 mm Fans (Optional) or 2x 140 mm Fans (Optional)

Compatibility:

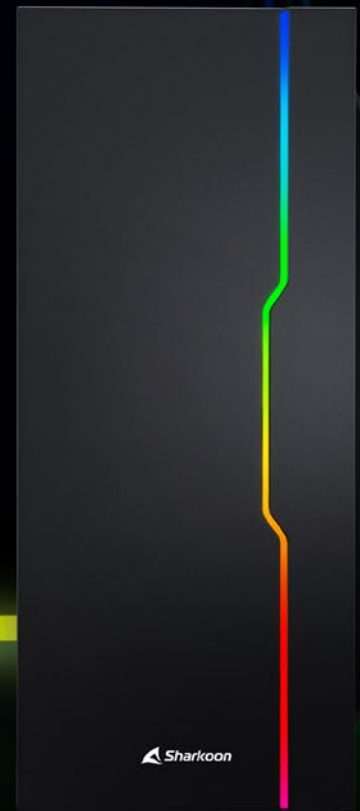
■ Mainboard:	Mini-ITX, Micro-ATX, ATX
■ Max. Length Graphics Cards:	31.0 / 33.5 cm*
■ Max. Height CPU Cooler:	15.7 cm
■ Max. Length Power Supply:	17.5 cm

Package Contents:

■ RGB Slider
■ Accessory Set
■ Manual

* Without front fan

ATX PC CASE
RGB SLIDER



www.sharkoon.com