

LWT-14510

denver.eu

03/2022

14" LCD e-Writing & Drawing Tablet

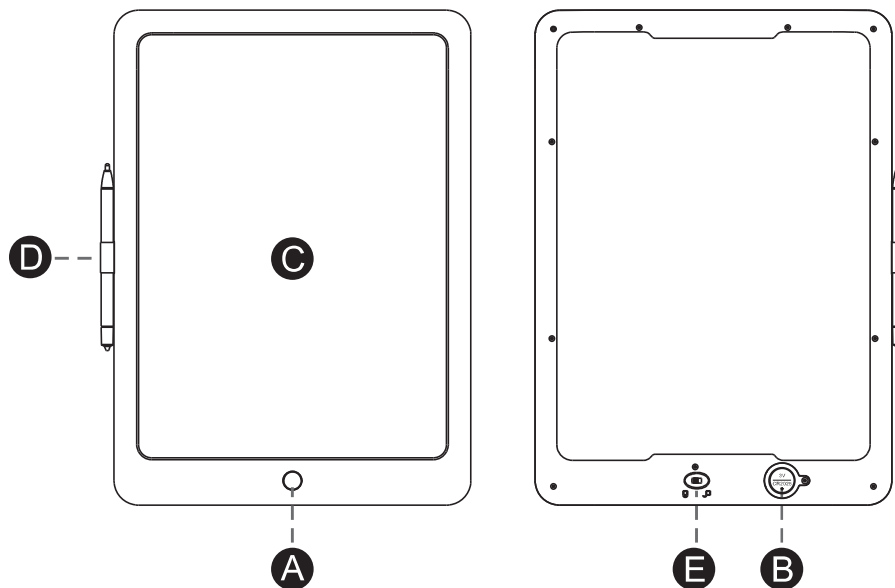
Instruction Manual

LWT-14510

Safety information

Please read the safety instructions carefully before using the product for the first time and keep the instructions for future reference.

- 1.This product is not a toy. Keep it out of reach of children.
- 2.Keep product out of the reach of children and pets to avoid chewing and swallowing.
- 3.Product operating and storage temperature is from 0 degree Celsius to 40 degree Celsius. Under and over this temperature might affect the function.
- 4.Never open the product. Repairs or service should only be performed by qualified personnel.
- 5.Do not expose to heat, water, moisture, direct sunlight!
- 6.The unit is not waterproof. If water or foreign objects enter the unit, it may result in fire or electric shock. If water or a foreign object enters the unit, stop use immediately.



A	Erase Button	B	Replaceable Battery
C	Writing Surface	D	Pen Dock
		E	Lock Button

What's in the Box:

- 1 x LCD Writing & Drawing Tablet
- 1 x Pen
- 1 x Instruction Manual
- 1 x "CR2025" Battery

Technical Specifications

- Writing Panel Size: 14"
- Battery Life: One Battery can be used for up to 50,000 screen erases.

Instructions:

1. Erasing the Surface:

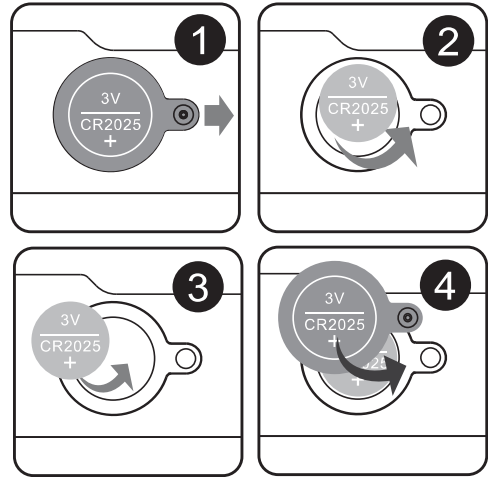
- Press the erase button to delete the contents written on the pad surface.

2. Screen Locking Function:

- To avoid accidental deleting your list or notes written on the tablet, move the screen lock switch to the LOCK position.
- Once you are done with your notes, you can switch to the ON position to erase the screen.

3. Battery:

- If the device cannot erase the screen, the battery might be weak. Replace the battery and try again.
- Remove the battery by pressing the release lever in the battery compartment.



Warning!

- Lithium battery inside!
- Do not open the product!
- Do not expose to heat, water, moisture or direct sunlight!

Please notice - All products are subject to change without any notice. We take reservations for errors and omissions in the manual.

ALL RIGHTS RESERVED, COPYRIGHT DENVER A/S

 **denver**
denver.eu



Electric and electronic equipment and included batteries contains materials, components and substances that can be hazardous to your health and the environment, if the waste material (discarded electric and electronic equipment and batteries) is not handled correctly.

Electric and electronic equipment and batteries is marked with the crossed out trash can symbol, seen above. This symbol signifies that electric and electronic equipment and batteries should not be disposed of with other household waste, but should be disposed of separately.

As the end user it is important that you submit your used batteries to the appropriate and designated facility. In this manner you make sure that the batteries are recycled in accordance with legislature and will not harm the environment.

All cities have established collection points, where electric and electronic equipment and batteries can either be submitted free of charge at recycling stations and other collection sites, or be collected from the households. Additional information is available at the technical department of your city.

DENVER A/S
Omega 5A, Soeften
DK-8382 Hinnerup
Denmark
www.facebook.com/denver.eu