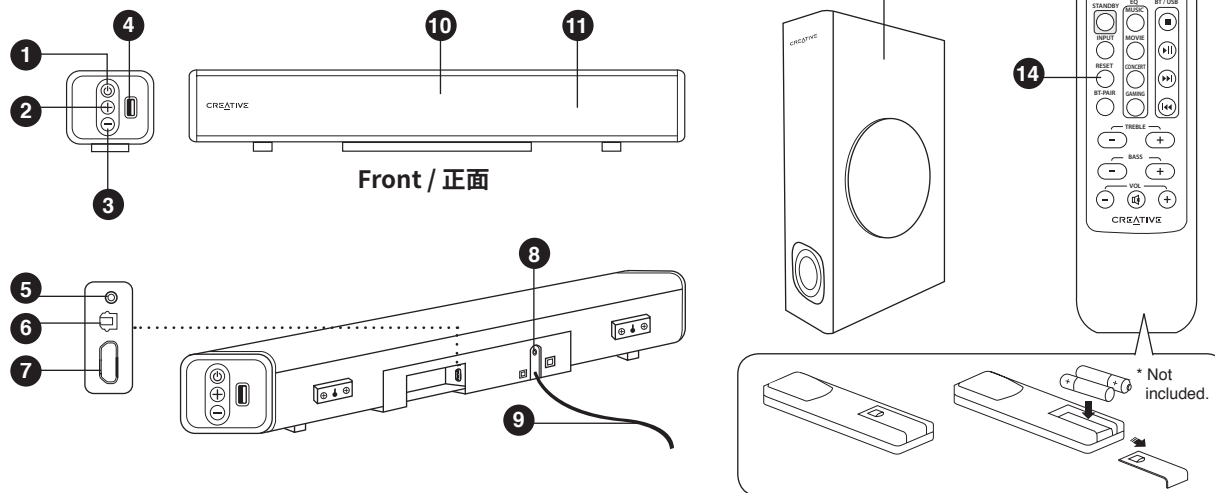
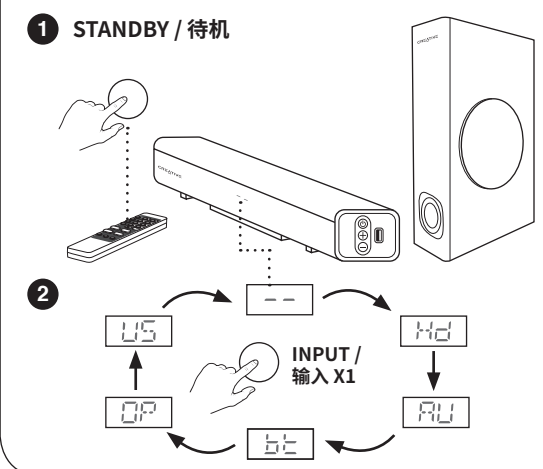


Overview / 概述

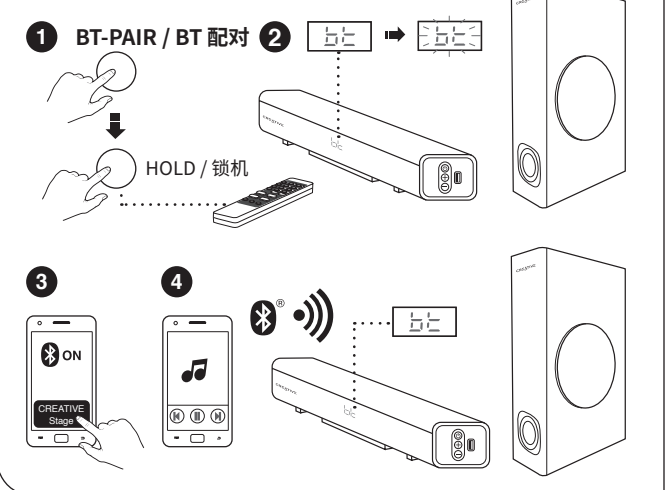


- 1 Standby / On / Source 待机/开/源码
- 2 Vol +
- 3 Vol -
- 4 USB Mass Storage Port / USB 大容量存储端口
- 5 3.5mm Aux-in / 3.5 毫米辅助输入
- 6 Optical Port / 光纤输入端口
- 7 TV ARC
- 8 to Subwoofer / 连接至低音炮
- 9 to Power Socket / 连接至电源插槽
- 10 LED Status Indicator / LED 状态指示灯
- 11 Infra Receiver / 红外接收器
- 12 Subwoofer / 低音炮
- 13 Remote Control / 遥控器
- 14 Master Reset (Press and Hold) / 主重置(按住)

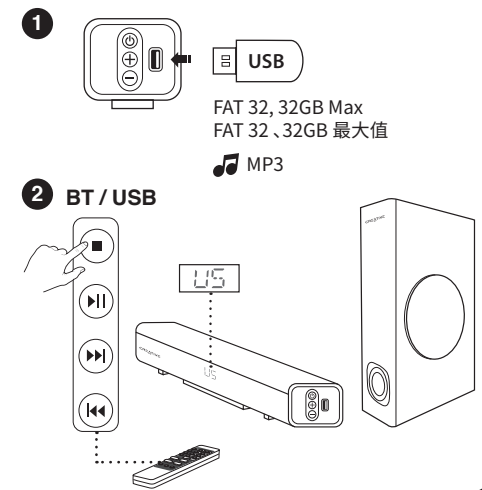
Power On / Standby / Source Setting 开机/待机/源设置



Bluetooth® / 蓝牙®



USB



EN Technical Specifications
 Bluetooth® Version: Bluetooth® 2.1 + EDR
 Operating Frequency: 2402 – 2480 MHz
 Operating Range: Up to 10 meters, measured in open space. Walls and structures may affect range of device.
 RF Output Power: < 4 dBm
 Supported Bluetooth® Profiles: A2DP (Wireless Stereo Bluetooth®), AVRCP (Bluetooth® Remote Control)
 Supported Codec: SBC
 Supported Audio Formats (USB Mass Storage): MP3
 Input: 100V - 240V, ~ 50 / 60Hz
 Speaker Power: 20W x 2, Satellite, 40W Subwoofer
 Frequency Response: 55Hz - 20kHz
 SNR: ≥ 72dB
 Operating Temperature Range: 0°C – 45°C
 *Not included. Sold Separately.

Other Information
 Please visit creative.com/compliance/Stage for the user guide, safety and regulatory information and ERP information where applicable.
 Please visit creative.com/support/Stage for all other support related to your product.

DE Technische Daten
 Bluetooth® Version: Bluetooth® 2.1 + EDR
 Driftfrequenz: 2402 – 2480 MHz
 Reichweite: Bis zu 10 m, im Freien gemessen. Wände und feste Strukturen können die Reichweite des Geräts vermindern.
 Ausgangsleistung des HF-Senders: < 4 dBm
 Unterstützte Bluetooth® Profile: A2DP (Drahtlose Stereosignalübertragung via Bluetooth®), AVRCP (Fernsteuerung via Bluetooth®)
 Unterstützter Codec: SBC
 Unterstützte Audioformate (USB-Massenspeichergerät): MP3
 Eingang: 100V - 240V, ~ 50 / 60Hz
 Lautsprecherleistung: 20W x 2, Satellit, 40W Subwoofer
 Frequenzgang: 55Hz - 20kHz
 Rauschabstand: ≥ 72dB
 Betriebstemperaturbereich des Gerätes: 0°C – 45°C
 *Nicht enthalten. Separat erhältlich.

Weitere Informationen
 Bitte besuchen Sie creative.com/compliance/Stage für das Benutzerhandbuch, Sicherheits- und Zulassungsinformationen und ERP-Informationen, falls zutreffend.
 Bitte besuchen Sie creative.com/support/Stage für alle weiteren Supportleistungen für Ihr Produkt.

ES Especificaciones Técnicas
 Versión Bluetooth®: Bluetooth® 2.1 + EDR
 Frecuencia de funcionamiento: 2402 – 2480 MHz
 Alcance Operativo: Hasta diez metros en espacios abiertos. Las paredes o estructuras pueden afectar al radio de funcionamiento del dispositivo.
 Potencia de salida de transmisor RF: < 4 dBm
 Perfiles Bluetooth® Admitidos: A2DP (Bluetooth® estéreo inalámbrico), AVRCP (Control remoto para Bluetooth®)
 Códex Admitidos: SBC
 Formatos de audio admitidos (Almacenamiento masivo USB): MP3
 Entrada: 100V - 240V, ~ 50 / 60Hz
 Alimentación de altavoz: 20W x 2, Satélite, 40W Subgrave
 Respuesta de frecuencia: 55Hz - 20kHz
 Relación señal/ruido: ≥ 72dB
 Rango de Temperatura Operativa del Dispositivo: 0°C – 45°C
 *No incluye. Se vende por separado.

Autres Informations
 Visite por favor creative.com/compliance/Stage para la guía de usuario, información sobre seguridad y reglamentos e información sobre ErP donde sea aplicable.
 Visite por creative.com/support/Stage para todo el soporte relacionado con osu producto.

RU Технические характеристики
 Версия Bluetooth®: Bluetooth® 2.1 + EDR
 Рабочая частота: 2402 – 2480 MHz
 Радиус действия: До 10 метров (для открытого пространства). Стены и строительные конструкции могут влиять на радиус действия устройства.
 Выходная мощность радиопередатчика: < 4 дБм
 Поддерживаемые профили Bluetooth®: A2DP (беспроводное воспроизведение стереозвука через Bluetooth®), AVRCP (дистанционное управление Bluetooth®)
 Поддерживаемый кодек: SBC
 Поддерживаемые форматы аудиофайлов (Запоминающее устройство для USB): MP3
 Вход: 100V - 240V, ~ 50 / 60Hz
 Мощность динамиков: 20W x 2, Колонка-спутник, 40W Сабвуфер
 Частотная характеристика: 55Hz - 20kHz
 Отношение сигнал/шум: ≥ 72dB
 Диапазон рабочих температур для эксплуатации устройства: 0°C – 45°C
 *Не входит в комплект. продается отдельно.

Дополнительная информация
 Пожалуйста посетите creative.com/compliance/Stage для того, чтобы найти руководство пользователя, информацию о безопасности и нормативных документах, информацию об ErP (где это применимо).
 Пожалуйста посетите creative.com/support/Stage для дальнейшей поддержки относительно Вашего продукта.

REGISTER YOUR PRODUCT 注册您的产品
www.creative.com/register

TECHNICAL SUPPORT 技术支持
www.creative.com/support

© 2019 Creative Labs Pte. Ltd. All rights reserved. Creative and the Creative logo are trademarks or registered trademarks of Creative Technology Ltd in the United States and/or other countries. The Bluetooth® word mark and logo are owned by the Bluetooth SIG, Inc. and any use of such marks by Creative Technology Ltd is under license. All other trademarks are the property of their respective owners and are hereby recognized as such. All specifications are subject to change without notice. Actual product may differ slightly from images shown. Use of this product is subject to a limited warranty.

EN Hereby, Creative Labs Pte. Ltd. declares the Bluetooth Speaker, model no. MF8360 is in compliance with Directive 2014/53/EU. The full text of the EU declaration of conformity is available at <http://www.creative.com/EUDoC>

FR Par la présente, Creative Labs Pte. Ltd. déclare ce Encarté Bluetooth que le modèle n° MF8360 est conforme à la Directive 2014/53/EU. L'intégralité du texte de la déclaration de conformité européenne est disponible sur <http://www.creative.com/EUDoC>

DE Hiermit erklärt Creative Labs Pte. Ltd. Bluetooth-Lautsprecher, Modellnr. MF8360 der Richtlinie 2014/53/EU entspricht. Der vollständige Text der EU-Konformitätserklärung ist unter <http://www.creative.com/EUDoC> verfügbar.

ES Por el presente, Creative Labs Pte. Ltd. declara que el Altavoz Bluetooth, modelo n° MF8360 cumple con lo establecido en la Directiva 2014/53/UE. El texto completo de la declaración de conformidad de la UE está disponible en <http://www.creative.com/EUDoC>

IT Creative Labs Pte. Ltd. dichiara che l'altoparlante Bluetooth, modello n. MF8360 è conforme alla Direttiva 2014/53/UE. Il testo completo della dichiarazione di conformità UE è disponibile su <http://www.creative.com/EUDoC>

NL Creative Labs Pte. Ltd. verklaart hierbij dat het Bluetooth luidspreker, modelnummer MF8360 in overeenstemming is met Richtlijn 2014/53/EU. De volledige tekst van de EU-vertikering van overeenstemming is beschikbaar op <http://www.creative.com/EUDoC>

PT Através do presente documento, a Creative Labs Pte. Ltd. declara que Coluna Bluetooth, modelo n.º MF8360 está em conformidade com a Diretiva 2014/53/UE. O texto completo da declaração de conformidade da UE está disponível em <http://www.creative.com/EUDoC>

DA Hermed erklærer Creative Labs Pte. Ltd. at Bluetooth-højttaler, model nr. MF8360 overholder direktivet 2014/53/EU. Den fulde tekst af EU-erklæringen om konformitet er tilgængelig på <http://www.creative.com/EUDoC>

SV Härmed förklarar Creative Labs Pte. Ltd. Bluetooth-högtalare, att model nr. MF8360 uppfyller direktiv 2014/53/EU. Den fullständiga texten av EU-Deklaration om överensstämmelse finns på <http://www.creative.com/EUDoC>

NO Creative Labs Pte. Ltd. erklærer herved den Bluetooth-høytaler, at modell nr. MF8360 er i samsvar med direktiv 2014/53/EU. Den fullstendige teksten til EU-samsvarserklæringen er tilgjengelig på <http://www.creative.com/EUDoC>

FI Creative Labs Pte. Ltd. illelennottaa, että Bluetooth-kalutin, malli nro MF8360 täyttää direktiivin 2014/53/EY vaatimukset. Koko EY-vaatimustenmukaisuusvaikutus on saatavilla osoitteessa <http://www.creative.com/EUDoC>

EL Με το παρόν, η Creative Labs Pte. Ltd. δηλώνει ότι το προϊόν Bluetooth Ηχείο, μοντέλο με αριθμό MF8360 συμμορφώνεται με την Οδηγία Διευκρίνιση 2014/53/ΕΕ. Μπορείτε να βρείτε το πλήρες κείμενο για τη δήλωση της ΕΕ σχετικά με τη συμμόρφωση στο <http://www.creative.com/EUDoC>

PL Spółka Creative Labs Pte. Ltd. ninajszym oświadczają, że Głośnik Bluetooth, model MF8360 jest zgodny z dyrektywą 2014/53/UE. Z pełnym tekstem deklaracji zgodności UE można zapoznać się pod adresem <http://www.creative.com/EUDoC>

SK Spoločnosť Creative Labs Pte. Ltd. týmto vyhlasuje, že Reproduktor Bluetooth, č. modelu MF8360, je v súlade so smernicou č. 2014/53/UE. Úplné znenie vyhlásenia o zhode EU je k dispozícii na lokalite <http://www.creative.com/EUDoC>

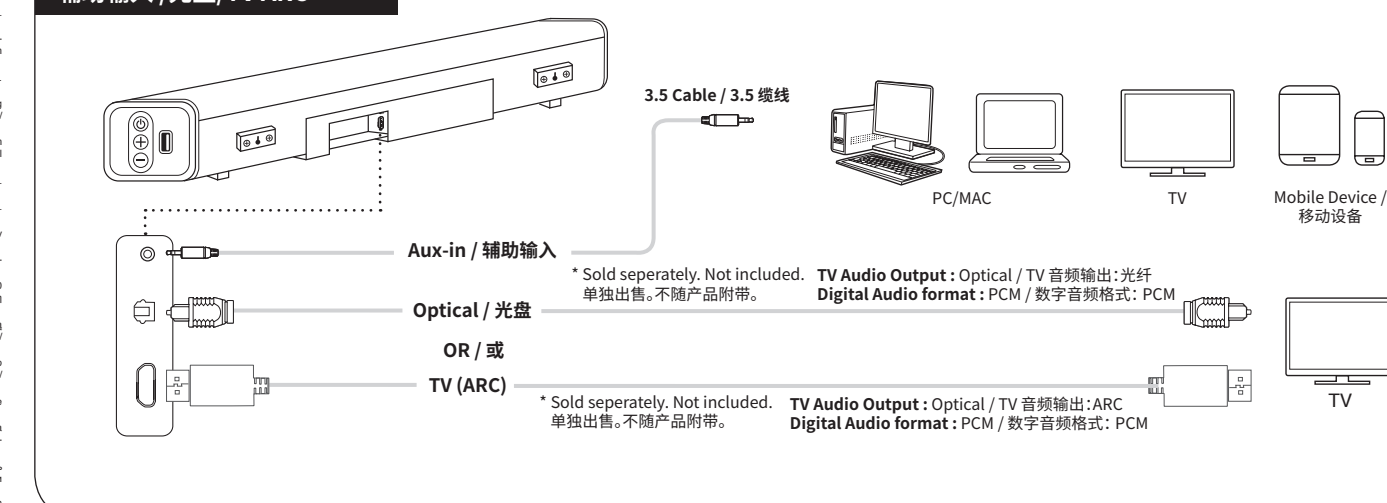
CZ Společnost Creative Labs Pte. Ltd. tímto prohlašuje, že výrobek Reproduktor Bluetooth, model č. MF8360 vyhovuje směrnici 2014/53/UE. Úplný text EU prohlášení o shodě je k dispozici na <http://www.creative.com/EUDoC>

HU A Creative Labs Pte. Ltd. ezáltal kijelenti, hogy az A2DP Bluetooth hangszóró termék, modellszámja MF8360, megfelel a 2014/53/EU irányelvben foglalt követelményeknek. Az EU megfelelési nyilatkozat teljes szövege elérhető a következő címen: <http://www.creative.com/EUDoC>

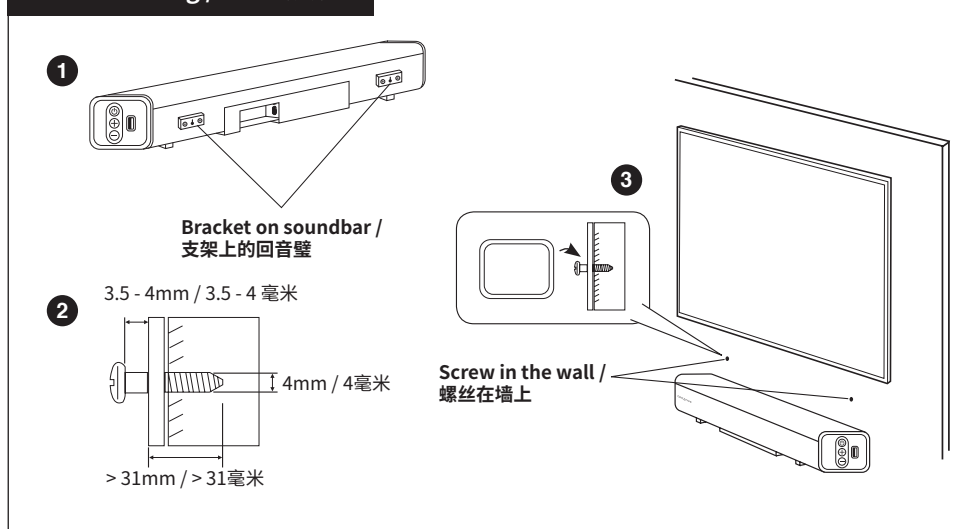
RU Настоящие документы Creative Labs Pte. Ltd. заявляют, что Динамик с подключением по Bluetooth, модель № MF8360 полностью соответствует Директиве 2014/53/ЕС. Полный текст Декларации о соответствии требованиям ЕС доступен на сайте <http://www.creative.com/EUDoC>

LT Creative Labs Pte. Ltd. pareiškia, kad Bluetooth® garsikabinas, modelio Nr. MF8360, atitinka Direktyvos 2014/53/ES reikalavimus. Visa ES atitikties deklaracija yra pateikiama <http://www.creative.com/EUDoC>

Aux-in / Optical / TV ARC 辅助输入/光盘/TV ARC



Wall Mounting / 壁挂式安装



FR Caractéristiques Techniques
 Version Bluetooth®: Bluetooth® 2.1 + EDR
 Fréquence de Fonctionnement: 2402 – 2480 MHz
 Portée de Fonctionnement: Jusqu'à 10 mètres, mesurés dans un espace ouvert.
 Les murs et les structures peuvent influencer sur la portée du périphérique.
 Sortie de puissance d'émission RF: < 4 dBm
 Profils Bluetooth® Pris en Charge: A2DP (Bluetooth® stéréo sans fil), AVRCP (télécommande Bluetooth®)
 Codescs Pris en Charg: SBC
 Formats audio pris en charge (Périphérique de stockage de masse USB): MP3
 Entrée: 100V - 240V, ~ 50 / 60Hz
 Puissance haut-parleurs: 20W x 2, Haut-parlants, 40W Caisson de graves
 Réponse en fréquence: 55Hz - 20kHz
 Rapport signal/bruit: ≥ 72dB
 Température de Fonctionnement du Périphérique: 0°C – 45°C
 *Non inclus. Vendu séparément.

Autres Informations
 Veuillez visiter creative.com/compliance/Stage pour le guide de l'utilisateur, les informations sur la sécurité et la réglementation et les informations ErP, ovs applicable.
 Veuillez visiter le site creative.com/support/Stage pour tout autre assistance liée à votre produit.

IT Specifiche Tecniche
 Versione Bluetooth®: Bluetooth® 2.1 + EDR
 Frequenza Operativa: 2402 – 2480 MHz
 Portata Operativa: Fino a 10 metri; misurazione eseguita in spazi aperti. Muri e altre strutture possono ridurre la portata del dispositivo.
 Potenza generata dal trasmettitore RF: < 4 dBm
 Profili Bluetooth® Supportati: A2DP (Bluetooth® wireless stereo), AVRCP (telecomando Bluetooth®)
 Codec Supportato: SBC
 Formati audio supportati (USB mass storage device): MP3
 Ingresso: 100V - 240V, ~ 50 / 60Hz
 Potenza altoparlante: 20W x 2, Altoparlanti, 40W Subwoofer
 Risposta in frequenza: 55Hz - 20kHz
 Rapporto segnale-rumore: ≥ 72dB
 Gamma Temperature di Funzionamento del Dispositivo: 0°C – 45°C
 *Non incluso. In vendita separatamente.

Ulteriori Informazioni
 Visita creative.com/compliance/Stage per visualizzare la guida dell'utente, le informazioni sulla sicurezza e sulle normative e le informazioni ErP, ovs applicabili.
 Visita creative.com/support/Stage per tutte le altre esigenze di supporto relative al tuo prodotto.

NL Technische Specificaties
 Bluetooth® Versie: Bluetooth® 2.1 + EDR
 Werkingfrequentie: 2402 – 2480 MHz
 Portaalte: Tot 10 meter, gemeten in open ruimte. Muren en objecten kunnen het bereik van het apparaat beïnvloeden.
 Potentia generata dal transmissore RF: < 4 dBm
 Profili Bluetooth® Supportati: A2DP (draadloze stereo Bluetooth®), AVRCP (telecomando Bluetooth®)
 Ondersteunde Codecs: SBC
 Formaten audio ondersteund (USB-stuurprogramma voor massasplslag): MP3
 Ingresso: 100V - 240V, ~ 50 / 60Hz
 Ingang: 100V - 240V, ~ 50 / 60Hz
 Luidsprekervermogen: 20W x 2, Satelliet, 40W Subwoofer
 Frequentiebereik: 55Hz - 20kHz
 Signaal-ruisverhouding (SNR): ≥ 72dB
 Werkingstemperatuur van Het Apparaat: 0°C – 45°C
 *Niet meegeleverd. Los verkrijgbaar.

Overige Informatie
 Bezoek creative.com/compliance/Stage voor de gebruikersgids, veiligheids- en regelgevende informatie en ErP-informatie waar van toepassing.
 Bezoek creative.com/support/Stage voor alle andere ondersteuning voor uw product.

PT Especificações Técnicas
 Versão de Bluetooth®: Bluetooth® 2.1 + EDR
 Frequência de Funcionamento: 2402 – 2480 MHz
 Alcance de Funcionamento: Até 10 metros, medido em espaço aberto. As paredes e estruturas podem afetar o alcance do dispositivo.
 Potência de saída do transmissor RF: < 4 dBm
 Perfis Bluetooth® Suportados: A2DP (Bluetooth® Estéreo Sem Fios), AVRCP (Controlo remoto Bluetooth®)
 Códex Suportados: SBC
 Formatos Audio Suportados (Dispositivo de armazenamento de massa USB): MP3
 Entrada: 100V - 240V, ~ 50 / 60Hz
 Alimentação do altifalante: 20W x 2, Satélite, 40W Subwoofer
 Resposta da frequência: 55Hz - 20kHz
 Relação Sinal/Ruído: ≥ 72dB
 Intervalo de Temperatura de Funcionamento do Dispositivo: 0°C – 45°C
 *Não incluído. Vendido separadamente.

Outras Informações
 Visite o creative.com/compliance/Stage para o guia do usuário, segurança e informações regulamentares e informações de ErP, onde aplicável.
 Visite o creative.com/support/Stage suporte para todos os outros relacionados ao seu produto.

SK Technické špecifikácie

Verzia Bluetooth®: Bluetooth® 2.1 + EDR
Prázdňokvôz: 2402 – 2480 MHz
Prevádzkový Dosah: Do 10 metrov (merané v otvorenom priestranstve). Steny a predmety môžu ovplyvniť dosah zariadenia. Steny a predmety môžu ovplyvniť dosah zariadenia.
Výstupný výkon RF vysielacia: < 4 dBm
Podporované Profily Bluetooth®: A2DP (Bezdrôtové stereo Bluetooth®), AVRCP (Diaľkové ovládanie Bluetooth®)
Podporované Kódy-kódov: SBC
Podporované formáty zvuku (Ukľadáacie zariadenie USB): MP3
Vstup: 100V - 240V, ~ 50 / 60Hz
Výkon reprodukt: 20W x 2, Satelitní reproduktor, 40W Basový reproduktor
Frekvenciová odozva: 55Hz - 20kHz
Pomer signál/šum: ≥ 72dB
Teplotný Rozsah Pri Prevádzke Zariadenia: 0°C – 45°C
*Nie sú súčasťou balenia. Predáva sa samostatne.

Ďalšie Informácie

Navštívte www.creative.com/compliance/Stage pre užívateľskú príručku, bezpečnostné a regulačné informácie a EIP informácie tam, kde je vhodné.
Navštívte www.creative.com/support/Stage pre všetky ostatné týkajúce sa vášho produktu.

DA Tekniske specifikationer

Bluetooth® Version: Bluetooth® 2.1 + EDR
Driftsfrekvens: 2402 – 2480 MHz
Rekkevidde: Op til 10 m, målt i åbne omgivelser. Vægge og strukturer kan påvirke enhedens rækkevidde.
RF-sender udgangseffekt: < 4 dBm
Understøttede Bluetooth® Profiler: A2DP (trådløs-stereo Bluetooth®), AVRCP (Bluetooth® fjernbetjening)
Understøttede Codecs: SBC
Understøttede lydformater (USB-lagerenhed): MP3
Indgang: 100V - 240V, ~ 50 / 60Hz
Højttaler Power: 20W x 2, Satellit, 40W Subwoofer
Frekvensrespons: 55Hz - 20kHz
Signal-til-støj-forhold: ≥ 72dB
Driftstemperaturområde for Enhed: 0°C – 45°C
*Medfølger ikke. Sælges separat.

Andre Oplysninger

Besog [creative.com/compliance/Stage](http://www.creative.com/compliance/Stage) for brugervejledningen, sikkerheds- og lovmæssige oplysninger om EIP-informasjon der det er aktuelt.
Besog [creative.com/support/Stage](http://www.creative.com/support/Stage) for al anden support relateret til dit produkt.

SV Tekniska Specifikationer

Bluetooth® Version: Bluetooth® 2.1 + EDR
Driftsfrekvens: 2402 – 2480 MHz
Räckvidd: Upp till 10 meter (uppmått på öppen yta). Väggor och andra strukturer kan påverka enhetens räckvidd.
Utteffekt RF-sändare: < 4 dBm
Tuet Bluetooth® Profiler: A2DP (Bezdrôtové stereo Bluetooth®), AVRCP (Diaľkové ovládanie Bluetooth®)
Kódy-kódov som Stöds: SBC
Podporované formáty zvuku (Ukľadáacie zariadenie USB): MP3
Ingång: 100V - 240V, ~ 50 / 60Hz
Högtalareffekt: 20W x 2, Satellit, 40W Subwoofer
Frekvensrespons: 55Hz - 20kHz
Signal-til-brus-förhållande: ≥ 72dB
Enhet, driftstemperaturområde: 0°C – 45°C
*Medföljer ej. Säljs separat.

Mer Information

Besök [creative.com/compliance/Stage](http://www.creative.com/compliance/Stage) för användarhandboken, säkerhets- och regulatorisk information samt EIP-information när så är tillämpligt.
Besök [creative.com/support/Stage](http://www.creative.com/support/Stage) för all annan support gällande din produkt.

NO Tekniske Spesifikasjoner

Bluetooth® Versjon: Bluetooth® 2.1 + EDR
Driftsfrekvens: 2402 – 2480 MHz
Rekkevidde: Intill 10 meter målt i åpent rom. Vegg og bygninger kan påvirke rekkevidden til enheten.
RF-sender Utgangstrom: < 4 dBm
Understøttede Bluetooth® Profiler: A2DP (trådløs-stereo Bluetooth®), AVRCP (Bluetooth® fjernbetjening)
Understøttede Codecs: SBC
Understøttede lydformater (USB-lagerenhet): MP3
Inngang: 100V - 240V, ~ 50 / 60Hz
Høytalerverm: 20W x 2, Satellit, 40W Subwoofer
Frekvensrespons: 55Hz - 20kHz
Signal-til-støy-forhold: ≥ 72dB
Enhetens Brukstemperatur: 0°C – 45°C
*Ikke inkludert. Sølges separat.

Andre opplysninger

Besök [creative.com/compliance/Stage](http://www.creative.com/compliance/Stage) for brukervejledningen, sikkerheds- og forskriftsinformasjon og EIP-informasjon der det er aktuelt.
Besök [creative.com/support/Stage](http://www.creative.com/support/Stage) for alle annen støtteinformasjon som gjelder produktet ditt.

FI Tekniset Tiedot

Bluetooth® Versio: Bluetooth® 2.1 + EDR
Toimintataajuus: 2402 – 2480 MHz
Toimintäsäde: Enintään 10 metriä, mitattu avoimessa tillassa. Seinät ja rakenteet voivat vaikuttaa enhetksen räckvidd.
Uteffekt RF-sändaren: < 4 dBm
Tuet Bluetooth® Profilit: A2DP (langaton stereo Bluetooth®), AVRCP (Bluetooth® (Diaľkové ovládanie Bluetooth®))
Koodit, som Stöds: SBC
Podporované formáty zvuku (Ukľadáacie zariadenie USB): MP3
Vstup: 100V - 240V, ~ 50 / 60Hz
Výkon reproduktora: 20W x 2, Satelitní, 40W Subwoofer
Pásmo: 55Hz - 20kHz
Signál-kořinansuh: ≥ 72dB
Enhet, driftstemperaturområde: 0°C – 45°C
*Není súčasťou balenia. Predáva sa samostatne.

Muuta tietoja

Osoitteesta [creative.com/compliance/Stage](http://www.creative.com/compliance/Stage) löydät käyttöoppaan, turvallisuus- ja säädöstiedot information samt EIP-información, jolla niitä tarvitaan.
Osoitteesta [creative.com/support/Stage](http://www.creative.com/support/Stage) löydät kaiken muun tuotteesi koskevan tukimateriaalin.

CS 技术规格

销售代号：Creative Stage
蓝牙版本: Bluetooth® 2.1 + EDR
工作频率: 2402 - 2480 MHz
作用范围: 最大 10 米 (此处在开放空间测量结果)。障碍物可能会影响装置的作用范围。
连接的蓝牙功能可能因信号传输造成影响。
支持的蓝牙配置文件: A2DP (无线立体声蓝牙)、AVRCP (蓝牙遥控)、AVRCP (蓝牙遥控)
支持的 codec: SBC
支持的音频格式 (USB 大容量存储设备): MP3
输入: 100V - 240V, ~ 50 / 60Hz
喇叭功率: 20W x 2, 环绕喇叭, 40W 低音炮
频率响应: 55Hz - 20kHz
信噪比: ≥ 72dB
设备工作温度: 0°C 至 45°C
*本产品附带, 需另行選購。

其他信息

请访问 [creative.com/compliance/Stage](http://www.creative.com/compliance/Stage) 获取用户指南、安全及法规信息以及通用的 EIP 信息。
请访问 [creative.com/support/Stage](http://www.creative.com/support/Stage) 获取与产品相关的其他所有帮助。

PL Dane Techniczne

Wersja Interfejsu Bluetooth®: Bluetooth® 2.1 + EDR
Częstotliwość Fobocza: 2402 – 2480 MHz
Zakres Działania: Do 10 metrów, pomiar na otwartej przestrzeni. Ściany i inne struktury mogą wpłynąć na zasięg działania urządzenia.
Moc wyjściowa nadajnika RF: < 4 dBm
Obsługiwane Profile Bluetooth®: A2DP (beprzewodowe stereo Bluetooth®), AVRCP (beprzewodowe sterowanie Bluetooth®)
Obsługiwane Kodyki: SBC
Obsługiwane formaty audio (Urządzenie pamięci masowej USB): MP3
Wpływ: 100V - 240V, ~ 50 / 60Hz
Wýkon reproduktora: 20W x 2, Satelitny, 40W Subwoofer
Pasmo Głosników: 20W x 2, Satelitny, 40W Subwoofer
Czaszłałowa odozwa: 55Hz - 20kHz
Odstęp sygnału od szumu: ≥ 72dB
Zakres Temperatur Pracy Urządzenia: 0°C – 45°C
*Neni zawarte w zestawie. W prodeji masoosno.

Inne Informacje

Odwiędz www.creative.com/compliance/Stage, aby zapoznać się ze skróconą instrukcją obsługi, informacjami na temat bezpieczeństwa i regulacji oraz informacjami o dystrybucji EIP.
Odwiędz www.creative.com/support/Stage, aby uzyskać pomoc z twoim produktem.

CT 技術規格

蓝牙版本: Bluetooth® 2.1 + EDR
工作频率: 2402 - 2480 MHz
作用范围: 最长约10m (障碍物不在空间内的场合です。壁や構造物がある際は受信範囲に影響が出る場合があります)。
对应的蓝牙配置文件: A2DP (ワイヤレスステオBluetooth®)、AVRCP (Bluetooth® リモートコントロール)
支持的 Codec: SBC
支持的音频格式 (USB 大容量存储设备): MP3
输入: 100V - 240V, ~ 50 / 60Hz
喇叭功率: 20W x 2, 环绕喇叭, 40W 低音喇叭
频率响应: 55Hz - 20kHz
信噪比: ≥ 72dB
制作温度范围: 0°C ~ 45°C
*本产品不附带, 需另行選購。

其他資訊

請訪問 [creative.com/compliance/Stage](http://www.creative.com/compliance/Stage) 獲取用戶指南、安全及法規信息以及適用的 EIP 信息。
請訪問 [creative.com/support/Stage](http://www.creative.com/support/Stage) 獲取與產品相關的其她所有幫助。

其他資訊

請訪問 [creative.com/compliance/Stage](http://www.creative.com/compliance/Stage) 獲取用戶指南、安全及法規信息以及適用的 EIP 信息。
請訪問 [creative.com/support/Stage](http://www.creative.com/support/Stage) 獲取與產品相關的其她所有幫助。

CZ Technické Specifikace

Verze Bluetooth®: Bluetooth® 2.1 + EDR
Provozní Frekvence: 2402 – 2480 MHz
Provozní Rozsah: Až 10 metrů, měřeno v otevřeném prostoru. Zdi a předměty mohou rozsat zařízení omezení.
Moc výšicová nadajníkã RF: < 4 dBm
Obslųgované Profile Bluetooth®: A2DP (bezprzewodowe stereo Bluetooth®), AVRCP (diaľkové ovládání rozhraní Bluetooth®)
Desteklenen Codecs: SBC
Desteklenen Ses Formati: USB Yiğın Depolama Aygıtı): MP3
Giriş: 100V - 240V, ~ 50 / 60Hz
Hoparlör Gücü: 20W x 2, Uydur, 40W Subwoofer
Wýkon reproduktora: 20W x 2, Satelitni, 40W Subwoofer
Kmitočková odozva: 55Hz - 20kHz
Signál-kořinansuh: ≥ 72dB
Czaszłałowa odozwa: 55Hz - 20kHz
Odstęp sygnału od szumu: ≥ 72dB
Zakres Temperatur Pracy Urządzenia: 0°C – 45°C
*Neni součástí. V prodeji masoosno.

Další Informace

Na www.creative.com/compliance/Stage najdete návod k použití, bezpečnostní a regulační informace a případné informace EIP.
Na www.creative.com/support/Stage najdete veškerou ostatní podporu pro váš produkt.

JP 技術仕様

Bluetooth®バージョン: Bluetooth® 2.1 + EDR
動作周波数: 2402 - 2480 MHz
受信範囲: 最長約10m (障害物のない空間での場合です。壁や構造物がある際は受信範囲に影響が出る場合があります)。
対応のBluetooth®プロファイル: A2DP (ワイヤレスステオBluetooth®)、AVRCP (Bluetooth® リモートコントロール)
対応のコーデック: SBC
サポートするオーディオフォーマット (USB マスタストレージ): MP3
入力: 100V - 240V, ~ 50 / 60Hz
スピーカー出力: 20W x 2, サブウーファー 40W
周波数特性: 55Hz - 20kHz
ITSIGNALノイズ比: ≥ 72dB
動作温度範囲: 0°C ~ 45°C
*含まれていません。

その他の情報

ユーザーズガイドや安全に関する情報、EIP指令 (該当する場合) などの情報は、[creative.com/compliance/Stage](http://www.creative.com/compliance/Stage) をご覧ください。
その他のサポート関連情報は、[creative.com/support/Stage](http://www.creative.com/support/Stage) をご覧ください。

其他資訊

請訪問 [creative.com/compliance/Stage](http://www.creative.com/compliance/Stage) 獲取用戶指南、安全及法規信息以及適用的 EIP 信息。
請訪問 [creative.com/support/Stage](http://www.creative.com/support/Stage) 獲取與產品相關的其她所有幫助。

TR Teknik Özellikler

Bluetooth® Sürümü: Bluetooth® 2.1 + EDR
Çalışma Frekansı: 2402 – 2480 MHz
Çalışma Mesafesi: 10 metreye kadar (açık alanda ölçülmüştür). Duvar ve yapılar cihazın çalışma mesafesini etkileyebilir.
Desteklenen Bluetooth® profilleri: A2DP (Kablosuz Stereo Bluetooth®), AVRCP (Bluetooth® Uzaktan Kumandası)
Desteklenen Codecs: SBC
Desteklenen Ses Formatları: (USB Yiğın Depolama Aygıtı): MP3
Giriş: 100V - 240V, ~ 50 / 60Hz
Hoparlör Gücü: 20W x 2, Uydur, 40W Subwoofer
Wýkon reproduktora: 20W x 2, Satelitni, 40W Subwoofer
Kmitočková odozva: 55Hz - 20kHz
Signál-kořinansuh: ≥ 72dB
Czaszłałowa odozwa: 55Hz - 20kHz
Odstęp sygnału od szumu: ≥ 72dB
Zakres Temperatur Pracy Urządzenia: 0°C – 45°C
*Neni součástí. V prodeji masoosno.

Diğer bilgiler

Lütfen [creative.com/compliance/Stage](http://www.creative.com/compliance/Stage) için kullanıcı kılavuzu, güvenlik ve düzenleyici bilgiler ve EIP bilgi mümkünse.
Lütfen [creative.com/support/Stage](http://www.creative.com/support/Stage) diğer tüm destek ilgili için.

المواصفات الفنية

Bluetooth® 2.1 + EDR Bluetooth® إصدار
تردد التشغيل: 2402-2480 ميجاهرتز
مدى النطاق: حتى 10 متر، قياسي في مكان مفتوح دون الحوائط والبنايات على نطاق التردد.
البروتوكولات المدعومة: A2DP (إيماءة Bluetooth®) AVRCP (التحكم عن بعد بـ Bluetooth®)
الدعم المدعوم: SBC
الدعم المدعوم للترميز الصوتي (USB ذاكرة تخزين كبيرة): MP3
مدخل: 100V - 240V, ~ 50 / 60Hz
موسر مكبر: 20W x 2, مكبر محيطي 40W
استجابة التردد: 55Hz - 20kHz
نسبة إشارة إلى ضوضاء: ≥ 72dB
مدى درجة حرارة التشغيل: 0°C ~ 45°C
*لا تتضمن المنتج.

معلومات اخرى

معلومات عن [creative.com/compliance/Stage](http://www.creative.com/compliance/Stage) للحصول على دليل المستخدم، معلومات السلامة والقوانين المعمول بها، ومعلومات EIP (حيثما ينطبق).
معلومات عن [creative.com/support/Stage](http://www.creative.com/support/Stage) للحصول على جميع المعلومات الأخرى المتعلقة بمنتجاتنا.

其他資訊

請訪問 [creative.com/compliance/Stage](http://www.creative.com/compliance/Stage) 獲取用戶指南、安全及法規信息以及適用的 EIP 信息。
請訪問 [creative.com/support/Stage](http://www.creative.com/support/Stage) 獲取與產品相關的其她所有幫助。

EA

Тип устройства: звуковая панель
Номер модели, торговая марка: MF8360, Creative
Питание: 100V - 240V, ~ 50 / 60Hz 2A
Производитель: Creative Labs Pte. Ltd.
Страна происхождения: Китай
Название и адрес представителя в таможенном союзе: ООО "ПроксИ", 142281, Московская область, город Протвино, Оокосовское шоссе, д.2, к.216.
Номер телефона: +7 (495) 369-00-84
+7 (901) 706-76-81
Электронный адрес: proxi.russia@gmail.com

Данные контактные информация только для соответствующих органов таможенного союза (Россия, Белоруссия и Казахстан) по вопросам соответствия продукции
Для информации о продукте или гларантии, пожалуйста, посмотрите гларантийный талон из комплекта поставки или производителя (месяц и год): Указана на упаковке.

Данное устройство отвечает требованиям Технического регламента Таможенного союза ТР ТС 004/2011 «О безопасности низковольтного оборудования» и/у. Решением КТС от 16.08.2011 г. №768.

Технического регламента Таможенного союза ТР ТС 020/2011 "Электронная совместимость технических средств" утв. Решением КТС от 09.12.2011г. №679

Podrobne informac o zariadenim obdobi gvarancie Creative dia Tvojego produktu mozna najst na stronic www.creative.com/warranty

Podrobne informac o lehote zãrùky od spoloãnosti Creative na váš výrobok nájdete na adrese www.creative.com/warranty

Podrobne informac o lehote zãrùky od spoloãnosti Creative na váš výrobok nájdete na adrese www.creative.com/warranty

Podrobne informac o lehote zãrùky od spoloãnosti Creative na váš výrobok nájdete na adrese www.creative.com/warranty

Podrobne informac o lehote zãrùky od spoloãnosti Creative na váš výrobok nájdete na adrese www.creative.com/warranty

Podrobne informac o lehote zãrùky od spoloãnosti Creative na váš výrobok nájdete na adrese www.creative.com/warranty

Podrobne informac o lehote zãrùky od spoloãnosti Creative na váš výrobok nájdete na adrese www.creative.com/warranty

Podrobne informac o lehote zãrùky od spoloãnosti Creative na váš výrobok nájdete na adrese www.creative.com/warranty

Podrobne informac o lehote zãrùky od spoloãnosti Creative na váš výrobok nájdete na adrese www.creative.com/warranty

Podrobne informac o lehote zãrùky od spoloãnosti Creative na váš výrobok nájdete na adrese www.creative.com/warranty

TR Teknik Özellikler

Bluetooth® Sürümü: Bluetooth® 2.1 + EDR
Çalışma Frekansı: 2402 – 2480 MHz
Çalışma Mesafesi: 10 metreye kadar (açık alanda ölçülmüştür). Duvar ve yapılar cihazın çalışma mesafesini etkileyebilir.
Desteklenen Bluetooth® profilleri: A2DP (Kablosuz Stereo Bluetooth®), AVRCP (Bluetooth® Uzaktan Kumandası)
Desteklenen Codecs: SBC
Desteklenen Ses Formatları: (USB Yiğın Depolama Aygıtı): MP3
Giriş: 100V - 240V, ~ 50 / 60Hz
Hoparlör Gücü: 20W x 2, Uydur, 40W Subwoofer
Wýkon reproduktora: 20W x 2, Satelitni, 40W Subwoofer
Kmitočková odozva: 55Hz - 20kHz
Signál-kořinansuh: ≥ 72dB
Czaszłałowa odozwa: 55Hz - 20kHz
Odstęp sygnału od szumu: ≥ 72dB
Zakres Temperatur Pracy Urządzenia: 0°C – 45°C
*Neni součástí. V prodeji masoosno.

Данные контактные информация только для соответствующих органов таможенного союза (Россия, Белоруссия и Казахстан) по вопросам соответствия продукции
Для информации о продукте или гларантии, пожалуйста, посмотрите гларантийный талон из комплекта поставки или производителя (месяц и год): Указана на упаковке.

Данное устройство отвечает требованиям Технического регламента Таможенного союза ТР ТС 004/2011 «О безопасности низковольтного оборудования» и/у. Решением КТС от 16.08.2011 г. №768.

Технического регламента Таможенного союза ТР ТС 020/2011 "Электронная совместимость технических средств" утв. Решением КТС от 09.12.2011г. №679

Podrobne informac o zariadenim obdobi gvarancie Creative dia Tvojego produktu mozna najst na stronic www.creative.com/warranty

Podrobne informac o lehote zãrùky od spoloãnosti Creative na váš výrobok nájdete na adrese www.creative.com/warranty

Podrobne informac o lehote zãrùky od spoloãnosti Creative na váš výrobok nájdete na adrese www.creative.com/warranty

Podrobne informac o lehote zãrùky od spoloãnosti Creative na váš výrobok nájdete na adrese www.creative.com/warranty

Podrobne informac o lehote zãrùky od spoloãnosti Creative na váš výrobok nájdete na adrese www.creative.com/warranty

Podrobne informac o lehote zãrùky od spoloãnosti Creative na váš výrobok nájdete na adrese www.creative.com/warranty

Podrobne informac o lehote zãrùky od spoloãnosti Creative na váš výrobok nájdete na adrese www.creative.com/warranty

Podrobne informac o lehote zãrùky od spoloãnosti Creative na váš výrobok nájdete na adrese www.creative.com/warranty

Podrobne informac o lehote zãrùky od spoloãnosti Creative na váš výrobok nájdete na adrese www.creative.com/warranty

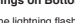
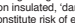

Podrobne informac o lehote zãrùky od spoloãnosti Creative na váš výrobok nájdete na adrese www.creative.com/warranty

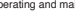


Podrobne informac o lehote zãrùky od spoloãnosti Creative na váš výrobok nájdete na adrese www.creative.com/warranty

EN

IMPORTANT REGULATORY SAFETY INSTRUCTIONS


Use a mains plug / cord that is appropriate for your country or region. DO NOT operate the product with other power sources.
Water and Moisture
CAUTION: Do not expose this apparatus to dripping or splashing fluids, and ensure that no objects filled with liquids – such as vases – are placed on the apparatus.
Placement
Place the product near a socket outlet, which is easily accessible.
Do not attempt to service any part of the product yourself as opening or removing covers may expose you to dangerous voltage or other hazards. Refer all servicing to qualified service personnel.
Safety Warnings on Bottom or Rear of Product (Including Enclosure)

 The lightning flash arrowhead within an equilateral triangle is intended to alert the user to the presence of non-insulated, "dangerous voltage" within the product(s)'s enclosure that may be of sufficient magnitude to constitute risk of electric shock to persons.
 The exclamation point within an equilateral triangle is intended to alert the user to the presence of important operating and maintenance (servicing) instructions in the literature accompanying this product(s).
 This Equipment is for in-house use only.


 This Equipment is a Class II or double insulated electrical appliance. It has been designed in such a way that it does not require a safety connection to electrical earth.
 Markings on the Power switch: "I" means product is powered on and "O" means the product is cut off from mains supply. - Applicable for products with Mains switch.
 **WARNING DO NOT OPEN**

TO PREVENT THE RISK OF ELECTRIC SHOCK, DO NOT REMOVE PRODUCT(S) COVERS (OR BACKS). NO USER-SERVICEABLE PARTS INSIDE. REFER SERVICING TO QUALIFIED SERVICE PERSONNEL.
TO PREVENT ELECTRIC SHOCK HAZARD, DO NOT CONNECT TO MAINS POWER SUPPLY WHILE GRILL IS REMOVED - WHERE APPLICABLE.
TO REDUCE THE RISK OF FIRE OR ELECTRIC SHOCK, DO NOT EXPOSE THIS APPARATUS TO RAIN OR MOISTURE.

For products) with grounding-type plug, it shall be connected to a mains socket with protective earthing connection. For detachable power cordset, the mains plug and appliance coupler used as the disconnecting device, shall remain readily operable. For non detachable power cordset, the mains plug used as the disconnecting device shall remain readily operable. Where an all-pole mains switch is used as the disconnect device, it shall remain readily operable.
Additional guidelines for wireless devices
• The short wave radio frequency signals of a wireless device may impair the operation of other electronic and medical devices.
• Switch off the device where it is prohibited. Do not use the device in medical facilities, aircraft, refueling points, close to automatic doors, automatic fire alarms or other automatically controlled devices.
• Keep this device at least 20 cm from pacemakers and other medical devices. Radio waves may impair the operation of pacemakers and other medical devices.

 **Waste Electrical and Electronic Equipment (WEEE) Symbol**
The use of the WEEE Symbol indicates that this product may not be treated as household waste. By ensuring this product is disposed of correctly, you will help protect the environment. For more information about the recycling of this product, please contact your local authority, your household waste disposal service provider or the shop where you purchased the product.

Notice for Europe
SAFETY & REGULATORY INFORMATION
CAUTION: This product is intended for use with FCC/CE certified computer equipment.
Please check the equipment operating instructions for the mains plug and/or the equipment manufacturer to verify/confirm if your equipment is suitable prior to the installation or use of the product.

 **Waste Electrical and Electronic Equipment (WEEE) Symbol**
The use of the WEEE Symbol indicates that this product may not be treated as household waste. By ensuring this product is disposed of correctly, you will help protect the environment. For more information about the recycling of this product, please contact your local authority, your household waste disposal service provider or the shop where you purchased the product.

Notice for Europe
SAFETY & REGULATORY INFORMATION
CAUTION: This product is intended for use with FCC/CE certified computer equipment.
Please check the equipment operating instructions for the mains plug and/or the equipment manufacturer to verify/confirm if your equipment is suitable prior to the installation or use of the product.

European Compliance
This product complies with all applicable directives, a copy of the EU DoC is available at [creative website](http://www.creative.com).
CAUTION: To comply with the Europe CE requirement, this device must be installed with CE certified computer equipment which meet with Class B limits.
All cables used to connect this device must be shielded, grounded and no longer than 3m in length. Operation with non-certified computers or incorrect cables may result in interference to other devices or undesired effects to the product.
MODIFICATION: Any changes or modifications not expressly approved by Creative Technology Limited or one of its affiliated companies could void the user's warranty and guarantee rights.

Notice for Singapore (Applicable for wireless products)

Complies with IMDA Standards DA107311

Ukraine RoHS Statement
Об'єднання виробників технічного регламенту щодо обмеження використання деяких небезпечних речовин в електронному та електронному обладнанні, затвердженого постановою Кабінету Міністрів України від 3 червня 2008 № 1057

Ukraine RoHS Statement
Об'єднання виробників технічного регламенту щодо обмеження використання деяких небезпечних речовин в електронному та електронному обладнанні, затвердженого постановою Кабінету Міністрів України від 3 червня 2008 № 1057

FOR PRODUCT(S) WITH BUILT-IN POWER SUPPLY

Important Safety Instructions
1. Read these instructions.
2. Keep these instructions.
3. Heed all warnings.
4. Follow all instructions.
5. Do not use this apparatus near water.
6. Clean only with dry cloth.
7. Do not block any ventilation openings.
8. Do not install near any heat sources such as radiators, heat registers, stoves, or other apparatus (including amplifiers) that operate normally or have been dropped.
9. Only use attachments/accessories specified by the manufacturer.
10. Use only with the cart, stand, tripod, bracket, or table specified by the manufacturer, or sold with the apparatus. When a cart is used, use caution when moving the cart/apparatus to avoid injury from tipping over.
11. Unplug this apparatus during lightning storms or when unused for long periods of time.
12. Refer all servicing to qualified service personnel. Servicing is required when the apparatus has been damaged in any way, such as power-supply cord or plug is

damaged, liquid has been spilled or objects have fallen into the apparatus, the power cord has been exposed to rain or moisture, does not operate normally, or has been dropped.
13. No water or flame sources, such as lighted candles, should be placed on the apparatus.
14. The ventilation and ports should be unobscured by covering the ventilation openings with films, such as newspapers, table-cloths, curtains, etc.

CS

重要的管制与安全说明
使用适用于您所在国家或地区的电源插头或电源线。切勿使用其他电源类型插此产品。
水和潮湿
警告: 本产品应避免在潮湿环境中使用, 避免受水溅或水滴影响, 避免将花瓶等物品摆放在本产品上, 以免发生危险。
* 本产品应放置在电源插座附近, 以便于使用。
维修
请勿自行打开或拆开外壳进行维修, 那可能会使您