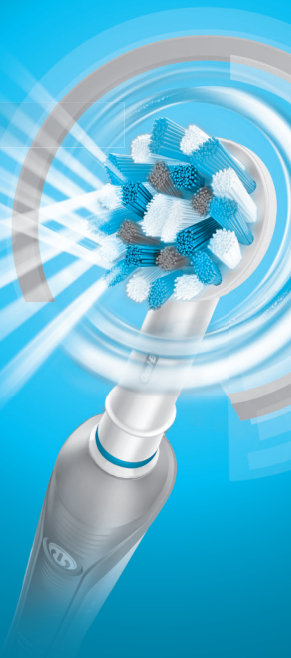


Oral-B®

PRO

powered by **BRAUN**

600/700



91268904



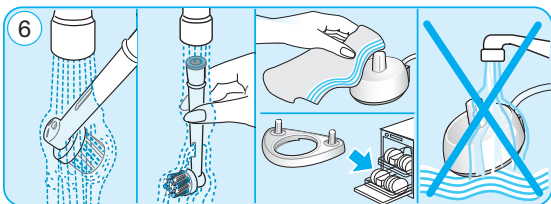
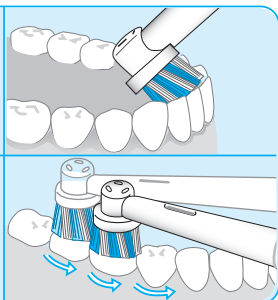
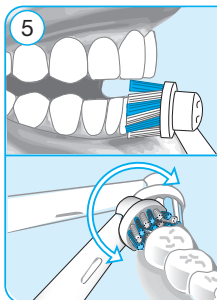
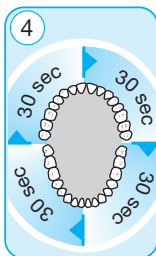
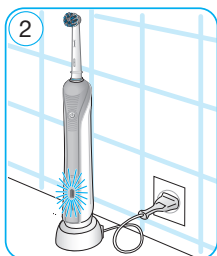
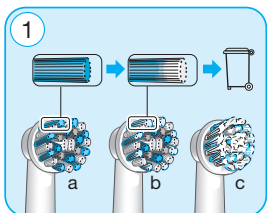
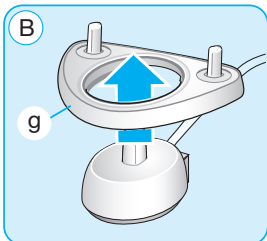
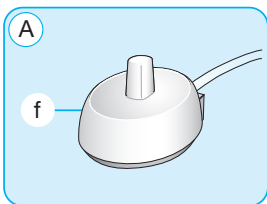
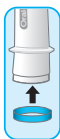
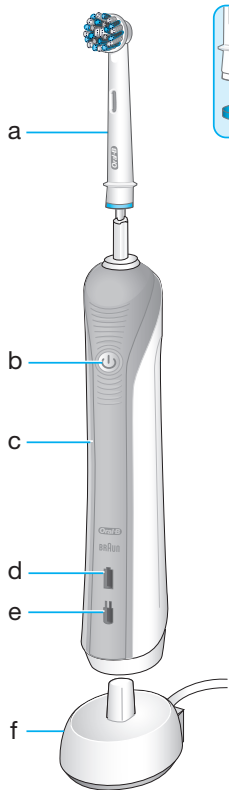
(CN)

如需了解更多产品信息，
请登陆我们的网站：www.oralb.com

Internet:
www.oralb.com

Charger type 3757
Handle type 3756

91268904/I-17
CN/GB



中文

欢迎您使用欧乐B电动牙刷!

在使用本牙刷之前，请仔细阅读本用户手册，并妥善保管以供日后查阅。

重要注意事项

- 定期检查电源线有否损坏。如有损坏，请将充电器送至博朗服务中心。已损坏或发生故障的电器不可继续使用。不要改装和自行维修本产品。这些行为可能会导致火灾、触电或造成其他伤害。
- 3岁以下儿童请勿使用。儿童、由于身体、感官和精神原因行动不便者及缺乏使用牙刷经验和知识的人群需要在有人监护下安全使用本产品，并了解可能存在的危险。
- 清洗和维修工作不要交给儿童。
- 不要让儿童玩耍本产品。
- 本产品只能用于本手册说明用途。不要使用厂商没有推荐使用的零配件。
- 口腔专业护理建议至少每三个月更换一支牙刷，如发现刷头磨损，可提早(或更早)更换。

警告

- 如果产品摔落，即使没有看见损伤也要在下次使用前更换牙刷头。
- 不要将充电器摆放在水里或其他液体中，或储藏在容易跌落浴缸或洗漱台的地方。不要接触已经掉入水中的充电器，而要立即拔出插头。
- 除非拆除电池，不要拆解本产品，取出废旧电池时要小心，不要导致正(+)负(-)极短路。
- 拔出插头时请注意握住插头而不是电源线。不要湿手触碰插头，以免触电。
- 如果您正在接受口腔治疗，请在使用前咨询您的口腔专家。
- 本牙刷是个人护理设备，不是专门针对牙科诊所或者机构设计，不要给多个病人使用。

产品描述

- a 刷头
- b 开/关键(模式选择)
- c 刷柄
- d 充电显示灯
- e 低电量显示灯
- f 充电器
- g 刷头储存架(按型号不同配置)

连接电源和充电

本牙刷带有防水刷柄，不会导电，可在浴室放心使用。

- 把充电器(f)或充电器底座(第2页图B)插入电源插座内，再把刷柄(c)放在充电器上。
- 当绿色充电指示灯(d)闪烁时，表示电动牙刷正在充电。当牙刷充满电时，指示灯关闭。牙刷充满一次电需要22小时，电量可供常规刷牙使用最多7天时间(每天两次，每次2分钟)(第2页图2)。
注意：完全放电后，绿色指示灯不会立即开始闪

烁，需要约10–15分钟才会开始闪烁。

- 当充电电池电量过低时，按牙刷开/关键后，红色低电量显示灯(e)会闪烁几秒。
- 日常使用时，刷柄应该放在充电器上，让牙刷保持充沛电力。电池不会出现过度充电。
- 为了保持充电电池的最佳性能，在正常使用情况下，应该至少每半年拔下充电器，将牙刷刷柄完全放电一次。

规格：

电压的规格请参考充电器底部。

声功率级噪声限值：≤65dB(A)

牙刷的使用

刷牙技巧

打湿刷头挤上牙膏，您可以使用任何种类的牙膏。为免牙膏飞溅，请在启动电动牙刷前先将刷头放置于口腔内（第2页图3）。用旋转刷头清洁牙齿时，顺序缓慢地移动刷头，使其在每颗牙齿表面停留数秒（第2页图5）。无论使用哪种刷头，请从牙齿外侧开始，然后牙齿内侧，再到咀嚼面，均匀地清洗您口腔内四个刷牙区间。您还可以咨询您的牙科医生或口腔卫生专家获得适合您的刷牙技巧。

使用电动牙刷的前几天时，您的牙龈可能会有轻微的出血现象。通常，几天后此现象应会消失。若使用两周后仍持续有出血现象，请咨询您的牙科医生或口腔卫生专家。对于牙齿和牙龈敏感人群，欧乐B推荐使用欧乐B“柔软敏感型”刷头。

刷牙模式(依据模式选择)

“日常清洁” – 日常口腔清洁标准模式

“柔和” – 轻柔彻底地清洁口腔敏感区域

“美白” – 美白抛光模式，可偶尔或者日常使用

如何在模式间切换：

牙刷启动时即是“日常清洁”模式。请继续按开/关键切换到其他模式。如需从“日常清洁”模式关闭牙刷，按住开/关键直到运转停止。

压力感应器

为了提供更好的刷牙体验，您的牙刷备有压力控制功能。如果压力过大，刷头的转动会继续，但是震动会被停止。此外您还会在刷牙时听到不同的声音。

专业计时器

每隔30秒会有短音提示您以便您平均洗刷口腔内的四个象限（第2页图4），长音表示您已经完成了专家推荐的2分钟刷牙时间。当您在刷牙期间临时关闭牙刷时，刷牙的时间不会被重新计算，但如果暂停超过30秒，计时器将会被重置（第2页图4）。

个性化的刷头和配件

欧乐B为您提供各种不同的牙刷刷头，以配合您的牙刷刷柄。

我们的摆动-旋转刷头可以精准清洁每颗牙齿。



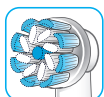
欧乐B多角度清洁型刷头EB50

这是欧乐B先进的牙刷刷头。刷毛有专门的角度，以实现精准清洁。能够松动和强力清洁牙菌斑。



欧乐B柔软敏感型刷头EB17S

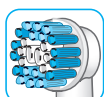
配有柔软刷毛结构，可以轻柔清洁牙齿和牙龈。



欧乐B超细毛^柔护型刷头EB60

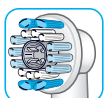
含有帮助清洁牙齿表面的常规毛和帮助轻柔清洁牙龈线的超细毛。

^指外圈刷毛



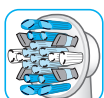
欧乐B精准清洁型刷头EB20

提供有效轻柔的清洁体验，帮助保护牙齿和牙龈。凹面刷毛结构刷头帮助包裹每颗牙齿，同时深度清洁牙齿间隙。



欧乐B专业美白型刷头EB18或3D美白型刷头EB18P

含有特殊抛光杯设计，可以自然美白牙齿。12岁以下儿童请勿使用专业美白型刷头或3D美白型刷头。



欧乐B牙线效果型刷头EB25

采用微脉冲刷毛，能够显著清洁牙间隙的牙菌斑。

大部分欧乐B电动牙刷头都配有浅蓝色显示®刷毛，帮助您检查是否需要更换刷头。随着每天刷牙两次，每次两分钟的彻底口腔清洁，刷毛会在大约3个月内由蓝色褪为白色，提醒您更换刷头。若在褪色前刷毛外张，这也许是您过度用力清洗牙齿和牙龈所致。

我们不推荐使用矫正牙套人群使用欧乐B牙线效果型刷头或欧乐B专业美白型刷头或3D美白型刷头。您可以使用欧乐B矫正型刷头，专门为清洁牙箍和钢丝区域而设计。

清洁建议

在刷牙后，保持刷柄电源处于打开状态，然后将刷头放在水流下进行清洗。然后关闭开关并取下刷头。将他们分别在流水下清洁，每次使用后，请将牙刷各组件擦拭干净后组装起来。在擦干前不要装在充电器上。刷头存储架(g)可用于洗碗机清洗，但不要将充电器放入洗碗机或水中，只能用湿布清洁(第2页图6)。

如有变动，恕不另行通知。

本产品包含电池和/或可回收电子垃圾。为了保护环境，请不要将本产品与生活垃圾一起处理，请送到贵国提供的电子垃圾回收点进行回收利用。



保修

我们为产品提供2年的有限保修，保修期从购买日开始计算。在保修期内对于材料或生产过程引起的各种瑕疵，我们会视情况更换零件或整个产品。本保修适用于全球范围内所有博朗公司及其指定供应商出售的博朗产品。

上述保修不包含以下内容：由于使用不当造成的产品损坏；正常使用引起的产品老化、磨损(如刷头等)；以及对产品的价值或使用功能影响不大的一些瑕疵。如果产品经过未经授权的人员修理，或产品使用了非本公司(博朗公司)的零件，保修期立即终止。若在保修期内需要维修，请在保修期内将本产品和销售收据一起交给授权的欧乐B博朗售后服务中心。

刷头保修

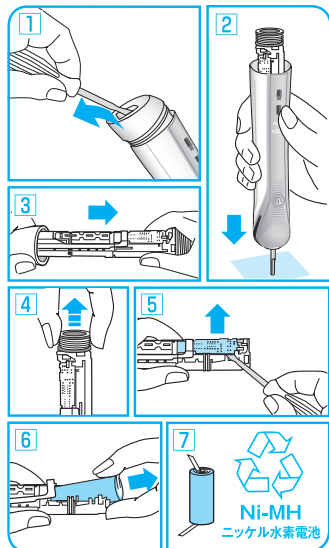
如果充电牙刷刷柄损坏是由于使用了非欧乐B品牌刷头，欧乐B的保修终止。

欧乐B不推荐使用非欧乐B品牌刷头，原因是：

- 欧乐B无法控制非欧乐B品牌刷头的质量，因此，我们无法保证非欧乐B品牌刷头的清洁效果，也无法确保刷头与充电刷柄之间通信和最初购买时完全一致。
- 欧乐B不能确保非欧乐B品牌刷头完全匹配欧乐B牙刷。
- 欧乐B不能预测非欧乐B品牌刷头对牙刷刷柄磨损的长期影响。

所有欧乐B品牌刷头都有欧乐B品牌标识，符合欧乐B的高质量标准。欧乐B没有使用其它品牌名称销售刷头或者刷柄零部件。

产品报废移除电池



请按图示打开刷柄，移除电池，根据当地环境妥善处置。
注意！一旦打开刷柄产品即被损坏，将无法享受质保服务。

产品信息

欧乐B 600/700 3D智能电动牙刷

充电器型号：3757

刷柄型号：3756

进口商/经销商：广州宝洁有限公司

广州市经济技术开发区滨河路一号

邮政编码：510730

热线4008307880或微信关注pgcrcare

刷柄和刷头原产国：德国

充电器原产国：中国

充电器标准：GB 4706.1, GB 4706.59

产品中有害物质的名称及含量

部件名称	有害物质					
	铅(Pb)	汞(Hg)	镉(Cd)	六价铬 (Cr(VI))	多溴联苯 (PBB)	多溴二苯醚 (PBDE)
电动马达	X	0	0	0	0	0
内置电池 (仅适用于 欧乐B清亮 型/亮杰型 系列电动 牙刷)	0	0	X	0	0	0

本表格依据SJ/T 11364的规定编制。

0：表示该有害物质在该部件所有均质材料中的含量均在GB/T 26572规定的限量要求以下。

X：表示该有害物质至少在该部件的某一均质材料中的含量超出了GB/T 26572规定的限量要求。

在某些产品中可能包含一次性电池，该电池并非宝洁公司产品，该电池的关于有害物质含量的标识应由电池生产商提供。

English

Welcome to Oral-B!

Before operating this toothbrush, please read these instructions and save this manual for future reference.

IMPORTANT

- Periodically check the cord for damage. If cord is damaged, take the charging unit to an Oral-B Service Centre. A damaged or non-functioning unit should no longer be used. Do not modify or repair the product. This may cause fire, electric shock or injury.
- Usage by children under age 3 is not recommended. Toothbrushes can be used by children and persons with reduced physical, sensory or mental capabilities or lack of experience and knowledge, if they have been given supervision or instruction concerning use of the appliance in a safe way and understand the hazards involved.
- Cleaning and maintenance shall not be performed by children.
- Children shall not play with the appliance.
- Use this product only for its intended use as described in this manual. Do not use attachments which are not recommended by the manufacturer.
- Replace brush (head) every 3 months or sooner if brush head becomes loose due to damage.

WARNING

- If the product is dropped, the brush head should be replaced before the next use even if no damage is visible.
- Do not place the charger in water or liquid or store where it can fall or be pulled into a tub or sink. Do not reach for it when fallen into water. Unplug immediately.
- Do not disassemble the product except when disposing of the battery. When taking out the battery for disposal of the unit, use caution not to short the positive (+) and negative (-) terminals.
- When unplugging, always hold the power plug instead of the cord. Do not touch the power plug with wet hands. This can cause an electric shock.
- If you are undergoing treatment for any oral care condition, consult your dental professional prior to use.
- This toothbrush is a personal care device and is not intended for use on multiple patients in a dental practice or institution.

Description

- a Brush head
- b On/off button (mode selection)
- c Handle
- d Charge indicator light
- e Low charge indicator light
- f Basic charger
- g Brush head holder (depending on model)

Connecting and charging

Your toothbrush has a waterproof handle, is electrically safe and designed for use in the bathroom.

- Plug the basic charger (f) or the assembled charging unit (see picture B, page 2) into an electrical outlet and place the toothbrush handle (c) on the charging unit.
- The green charge indicator light (d) flashes while the handle is being charged. Once it is fully charged, the light turns off. A full charge can take typically 22 hours and enables up to seven days of regular brushing (twice a day, 2 minutes) (picture 2, page 2). Note: After deep discharge, the green light might not flash immediately; it can take up to 10–15 minutes.
- If the rechargeable battery is low the red charge indicator light (e) is flashing for some seconds when turning your toothbrush on/off.
- For everyday use, the handle can be stored on the charging unit to maintain it at full power. Overcharging is impossible.
- To maintain the maximum capacity of the rechargeable battery, unplug the charging unit and fully discharge the handle with regular use at least every 6 months.

Specifications

For voltage specifications please refer to the bottom of the charging unit.

Noise level: ≤ 65 dB (A)

Using your toothbrush

Brushing technique

Wet brush head and apply any kind of toothpaste. To avoid splashing, guide the brush head to your teeth before switching on the appliance (picture 3, page 2). Guide the brush head slowly from tooth to tooth, spending a few seconds on each tooth surface (picture 5, page 2).

Start brushing the outsides, then the insides and finally the chewing surfaces. Brush all four quadrants of your mouth equally. You may also consult your dentist or dental hygienist about the right technique for you.

In the first days of using any electric toothbrush, your gums may bleed slightly. In general, bleeding should stop after a few days. Should it persist after 2 weeks, please consult your dentist or dental hygienist. If you have sensitive teeth and/or gums, Oral-B recommends using the Oral-B «Sensitive» brush head.

Brushing modes (depending on model)

«Daily Clean» – Standard mode for daily mouth cleaning

«Sensitive» – Gentle, yet thorough cleaning for sensitive areas

«Whitening» – Exceptional whitening for occasional or everyday use

How to switch between modes:

Your toothbrush automatically starts in «Daily Clean» mode. To switch to other modes, successively press the on/off button. If you wish to turn off your toothbrush from «Daily Clean» mode, push and hold down the on/off button until the motor stops.

Pressure Sensor

To promote optimal brushing your toothbrush has a pressure control feature installed. If too much pressure is applied, the oscillating movement of the brush head will continue but the pulsation will stop. In addition you will also hear a different sound while brushing.

Professional Timer

A short stuttering sound at 30-second intervals reminds you to brush all four quadrants of your mouth equally (picture 4, page 2). A long stuttering sound indicates the end of the professionally recommended 2-minute brushing time. The elapsed brushing time is memorised when the handle is briefly switched off during brushing. When pausing longer than 30 seconds the timer resets (picture 4, page 2).

Individual brush heads and accessories

Oral-B offers you a variety of different Oral-B brush heads that fit your Oral-B toothbrush handle.

Our **oscillating-rotating brush heads** can be used for tooth-by-tooth precision cleaning.



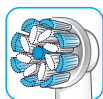
Oral-B CrossAction brush head

Our most advanced brush head. Angled bristles for a precise clean. Lifts and powers away plaque.



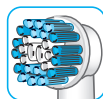
Oral-B Sensitive brush head

features an extra soft bristle structure that is gentle on teeth and gums.



Oral-B Sensi Ultrathin brush head

features a combination of regular bristles to clean teeth surfaces and ultrathin bristles for a gentle brushing experience on the gumline.



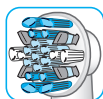
Oral-B Precision Clean brush head

provides effective and gentle cleaning action to help protect both teeth and gums. The brush head cups each tooth with a curved bristle trim and reaches deep between teeth at the same time.



Oral-B 3D White brush head

features a special polishing cup to naturally whiten your teeth. Please note that children under 12 years old should not use the Oral-B «3D White» brush head.



Oral-B FlossAction brush head

features micropulse bristles that allow for an outstanding plaque removal in the interdental areas.

Most Oral-B brush heads feature light blue INDICATOR® bristles to help you monitor brush head replacement need. With thorough brushing, twice a day for two minutes, the blue color will fade halfway approximately within 3 months, indicating the need to exchange your brush head. If the bristles splay before the color recedes, you may exert too much pressure on teeth and gums.

We do not recommend using the Oral-B «FlossAction» or Oral-B «3D White» brush head with braces. You may use the Oral-B «Ortho» brush head, specifically designed to clean around braces and wires.

Cleaning recommendations

After brushing, rinse your brush head carefully under running water for some seconds with the handle switched on. Switch off the handle and remove the brush head. Clean both parts separately under running water; then wipe them dry before reassembling the toothbrush. Disassemble the charging unit before cleaning. The brush head holder (g) is dishwasher-safe. Never place the charger in dishwasher or water; it should be cleaned with a damp cloth only (picture 6, page 2).

Subject to change without notice.

Product contains batteries and/or recyclable electric waste. For environment protection do not dispose in household waste, but for recycling take to electric waste collection points provided in your country.



Guarantee

We grant 2 years guarantee on the product commencing on the date of purchase. Within the guarantee period we will eliminate, free of charge, any defects in the appliance resulting from faults in materials or workmanship, either by repairing or replacing the complete appliance as we may choose. This guarantee extends to every country where this appliance is supplied by Braun or its appointed distributor. This guarantee does not cover: damage due to improper use, normal wear or use, especially regarding the brush heads, as well as defects that have a negligible effect on the value or operation of the appliance. The guarantee becomes void if repairs are undertaken by unauthorized persons and if original Braun parts are not used.

To obtain service within the guarantee period, hand in or send the complete appliance with your sales receipt to an authorized Oral-B Braun Customer Service Centre.

Warranty replacement brush heads

Oral-B warranty will be voided if electric rechargeable handle damage is found to be attributed to the use of non-Oral-B replacement brush heads.

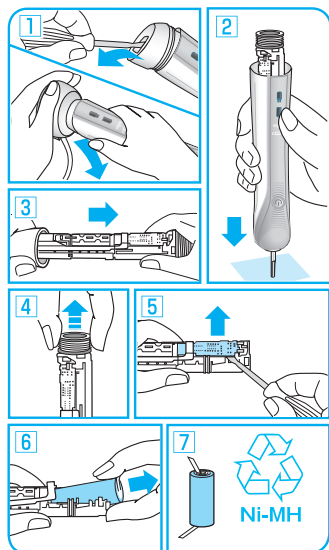
Oral-B does not recommend the use of non-Oral-B replacement brush heads.

- Oral-B has no control over the quality of non-Oral-B replacement brush heads. Therefore, we cannot ensure the cleaning performance of non-Oral-B replacement brush heads, as communicated with the electric rechargeable handle at time of initial purchase.
- Oral-B cannot ensure a good fit of non-Oral-B replacement brush heads.
- Oral-B cannot predict the long-term effect of non-Oral-B replacement brush heads on handle wear.

All Oral-B replacement brush heads carry the Oral-B logo and meet Oral-B's high quality standards. Oral-B does not sell replacement brush heads or handle parts under any other brand name.

Battery removal at the end of the product's useful life

Open the handle as shown, remove the battery and dispose of it according to the local environmental regulations.



Caution! Opening the handle will destroy the appliance and invalidate the guarantee.