

# PHILIPS

Gradient lightstrip 2  
metre

Hue White and Colour  
Ambiance

LED integrated

Bluetooth control via app

Control with app or voice\*

Add Hue Bridge to unlock more



8719514339965



## Easy smart lighting

Featuring gradient technology, this lightstrip blends different colours of light together at once. It's flexible and extendable up to 10 meters, letting you add a brilliant blend of colour to any space.



### Easy smart lighting

- Control up to 10 lights with the Bluetooth app
- Control lights with your voice\*
- Create a personalised experience with colourful smart light
- Set the right mood with warm to cool white light
- Unlock the full suite of smart lighting features with the Bridge
- Seamlessly blend colours
- Shape, cut or extend
- Extendible up to 33 feet
- Dynamic light scenes

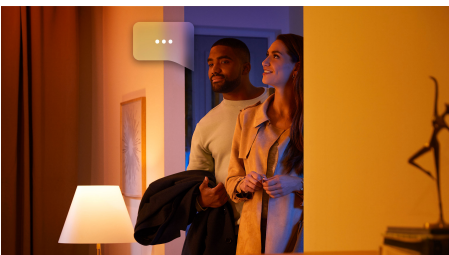
# Highlights

## Control up to 10 lights with the Bluetooth app



With the Hue Bluetooth app, you can control your Hue smart lights in a single room of your home. Add up to 10 smart lights and control them all with just the touch of a button on your mobile device.

## Control lights with your voice\*



Philips Hue works with Amazon Alexa and the Google Assistant when paired with a compatible Google Nest or Amazon Echo device. Simple voice commands allow you to control multiple lights in a room, or just a single lamp.

## Create a personalised experience with colourful smart light



Transform your home with over 16 million colours, instantly creating the right atmosphere for any event. With the touch of a button, you can set a festive mood for a party, turn your living room into a movie theatre, enhance your home decor with colour accents, and much more.

## Set the right mood with warm to cool white light



These bulbs and light fixtures offer different shades of warm to cool white light. With complete dimmability from bright to low nightlights, you can tune your lights to the perfect shade and brightness of light for your daily needs.

## Unlock the full suite of smart lighting features with the Bridge



The Bridge unlocks the features that make smart lighting truly smart – away-from-home control, voice control, automated lighting and much more. Add a Bridge to your setup to create immersive experiences, tap into technology that's secure and reliable, and more. The Bridge is the key to smart lighting like you've never seen before.

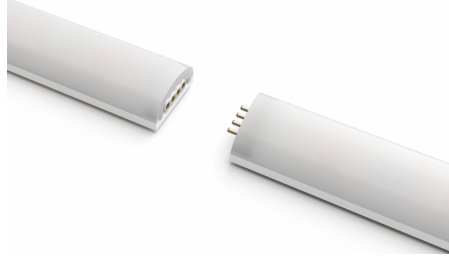
## Seamlessly blend colours



Get a seamless blend of multiple colours of light at the same time in a single LED strip. The colours flow together naturally, casting light to showcase a unique effect.

**Shape, cut or extend**

Completely flexible, the gradient lightstrip lets you shape and bend it to fit your space. Attach a gradient lightstrip extension for larger surfaces or cut the strip to size to fit into a smaller space.

**Extendible up to 9.75 metres/32 feet**

Extend your Philips Hue gradient lightstrip up to 9.75 metres/32 feet with 1-metre/40-inch extensions. Cover larger areas with a colourful and consistent blend of light, such as full-room cove lighting or under a bed.

**Dynamic light scenes**

Amp up the ambiance of special moments with living light. Use dynamic scenes to create the perfect mood in any situation.

## Specifications

**Design and finishing**

- Colour: White
- Material: silicone

**Environmental**

- Operational humidity: 5% <H<95% (non-condensing)
- Operational temperature: -20°C to 45°C

**Extra feature/accessory incl.**

- Colour changing (LED): Yes
- Dimmable: Yes
- Dimmable with the Hue app and switches: Yes
- LED integrated: Yes

**Guarantee**

- 2 years: Yes

**Light characteristics**

- Colour rendering index (CRI): >80

**Lightstrip**

- Colour temperature string lights: 2000–6500 K
- Cut-ability: Yes
- Extendibility: Yes
- Input Voltage string lights: 220V–240V
- Lifetime: 25,000 h
- Wattage string lights: 20 W
- Width: 15 mm
- Length: 78.7 in
- Width: 0.57 in

**Miscellaneous**

- Type: Light strip

**Packaging information**

- EAN: 8719514339965

**Power consumption**

- Wattage: 20 W
- Standby power consumption: 0.50 W

**Product dimensions and weight**

- Net weight: 0.420 kg
- Net weight: 0.93 lb
- Height: 0.55 cm
- Length: 200 cm
- Width: 1.45 cm

**Service**

- Warranty: 2 year(s)

### Technical specifications

- Lumen output at 4000K: 1,800 lm
- Lifetime up to: 25,000 h
- Lifetime: 25000h
- Mains power: 100–240 V
- IP code: IP20
- Class of protection: Class II
- Replaceability of light source:  
Replaceable LED light source by a professional
- Replaceability of control gears:  
Replaceable control gear by end user
- Lumen output at 2700K: 1,600 lm

### What's in the box

- Power adapter: 1

### What's supported

- Compatible with Effects feature: Yes
- Philips Hue App: IOS 15 and above, Android 10.0 and above
- Philips Hue Bluetooth App: IOS 15 and above, Android 9.0 and above

### Packaging dimensions and weight

- EAN/UPC - product: 8719514339965
- Net weight: 0.42 kg
- Gross weight: 0.59 kg
- Height: 72 mm
- Length: 140 mm
- Width: 219 mm
- Material number (12NC):  
929002994901



Issue date: 2023-11-16  
Version: 0.317

© 2023 Signify Holding. All rights reserved. Signify does not give any representation or warranty as to the accuracy or completeness of the information included herein and shall not be liable for any action in reliance thereon. The information presented in this document is not intended as any commercial offer and does not form part of any quotation or contract, unless otherwise agreed by Signify. Philips and the Philips Shield Emblem are registered trademarks of Koninklijke Philips N.V.

[www.lighting.philips.com](http://www.lighting.philips.com)