

MODECOM VOLCANO AMIRANI

ARGB LED fans.

Construction with good airflow.

Great possibility of interior arrangement.





FANS

2 x 200 mm ARGB fans on the front and 1 x 120 mm on the back. Fan speed can be controlled from case panel or via the remote control.



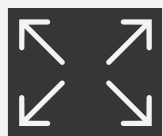
MESH

Good ventilation thanks to the mesh front panel.



GLASS

Tempered glass on the side of the case.



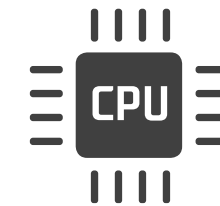
CAPACITY

Great possibilities of interior arrangement.



QUALITY

The use of high-quality materials during production ensures its durability.



CPU COOLING

165 mm CPU cooling can be installed.



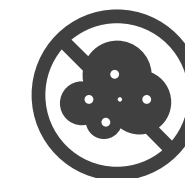
FUNCTIONAL

Functional interior with a tunnel for power supply and HDD 3.5"



GRAPHIC CARD

Space for graphics cards up to 380 mm. The card can be mounted vertically.



FILTERS

Anti-dust filters



TEMPERED GLASS

Tempered glass on the side of the case.

REAR FAN

Illuminated, 120 mm ARGB fan on the back of the case.

ARGB FANS

2 x 200 mm illuminated fans.

MESH

The mesh on the front panel provides good airflow.





PCIe BRACKETS WITH SCREWS

All PCIe brackets are installed with screws. You can easily remove any PCIe bracket without breaking it them out.

WINDOW

A window in the tunnel allows you to display the PSU logotype.

CABLE GROMMET

Rubber cable grommet - not only does it look more aesthetically pleasing, but it also increase safe for the cables.

TUNNEL

Tunnel for power supply and hard drives.



ATX

ATX standard

MODERN APPEARANCE

Modern and beautiful appearance of the PC case thanks to illuminated fans and fashionable design.

ILLUMINATION

The backlight of fans can be freely configured, both from the top panel and the remote control.



AMIRANI



Capacious and modern PC case.





**MODERN
WHITE**

**ELEGANT
BLACK**





PC CASE

Buying a good computer case is a real challenge. It must play the role of a capacious structure, look modern and provide low temperatures.

In the Volcano Amirani, we combined all the needs of gamers to build an efficient, gaming computer.

Modern design, good air circulation, ARGB fans, great possibilities of interior arrangement are the key features of the MODECOM Volcano Amirani.





COOLING IS THE MOST IMPORTANT

MODECOM Volcano Amirani is an ATX case with wide functionality. The front of the case made of mesh and two 200 mm fans with ARGB illumination ensure perfect cooling of the heated components. For even better airflow, one 120mm fan is also pre-installed on the back of the case. The case, however, gives the user many options for a different arrangement of cooling. The front panel allows the installation of three 120 mm fans or two 140 mm ones. However, on the top panel, you can install another two 120 mm or 140 mm fans. Optionally, it is also possible to install two additional fans on the tunnel covering the power supply and the HDD basket inside this case.





AMIRANI

The history of MODECOM PC cases goes back over 20 years and is related to the establishment of the company. The evolution of the design of personal computer cases, which has been going on for years, results in interesting and practical solutions that are not only intended to protect and improve the functioning of components (protection against dust, dirt, overheating), but at the same time performs the aesthetic function of the gamers desks.

MODECOM VOLCANO AMIRANI is the next step in the evolution of computer cases.

TEMPERED GLASS AND RUBBER CABLE GROMMET



MODECOM Amirani has tempered glass on the side of the housing. It has been limited to one side panel only in favor of airy mesh panels. Inside, there are rubber cable grommets. They are designed to protect the cables against damage.

10 REASONS WHY YOU SHOULD HAVE IT

01. ARGB

ARGB fans allows any gaming computer illumination. The backlight can be controlled using the included remote control or from the top panel.

02. FANS

Pre-installed two 200mm fans at the front and one 120mm at the rear.

03. PCIE BRACKETS WITH SCREWS

All PCIe brackets are with screws.

04. VERTICAL GPU MOUNTING

Vertical mounting of the graphics card (optional).

05. RUBBER CABLE GROMMET

They are designed to protect the cables against damage.



10 REASONS WHY YOU SHOULD HAVE IT

06. **SSD / HDD
INSTALLATION**

Hard drives - SSD or HDD can be installed in the tunnel or on the back of the motherboard tray. This gives a lot of freedom in interior design.
07. **TUNNEL**

The power supply tunnel separates the PSU from other components. This solution ensures a lower temperature inside the housing.
08. **TEMPERED GLASS**

Tempered glass side panel.
09. **MESH AND
FILTERS**

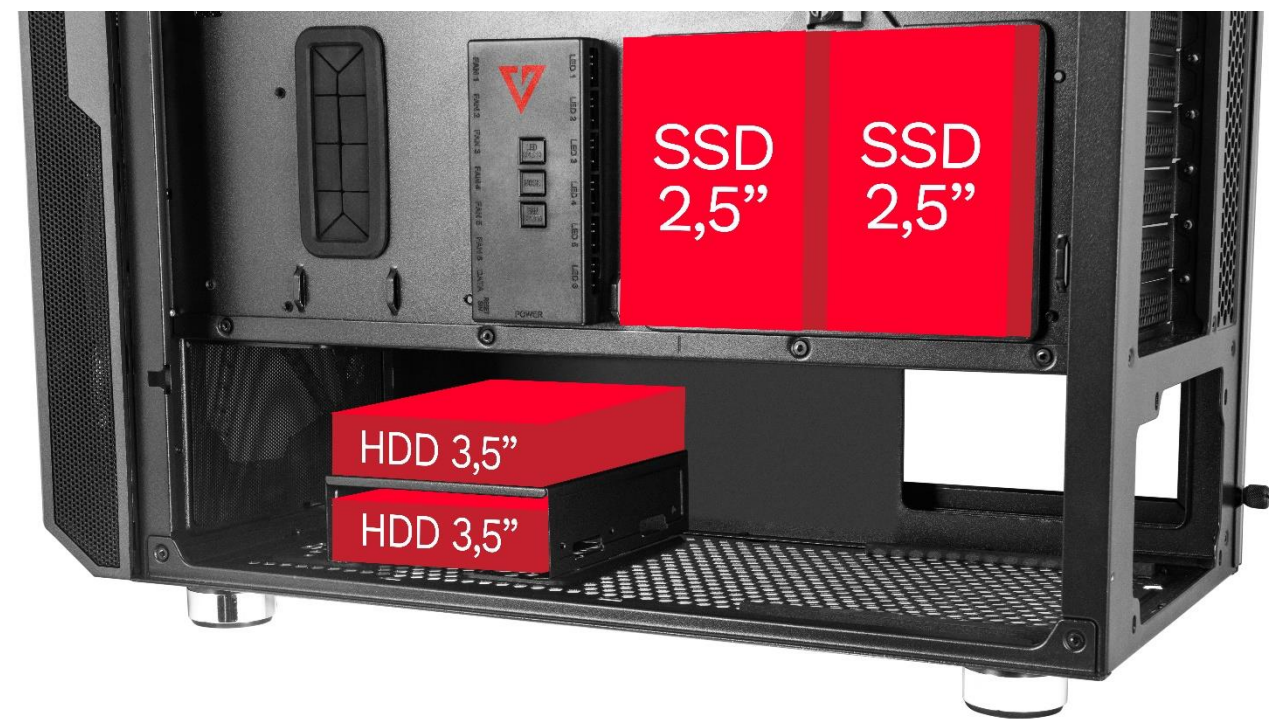
Mesh and anti-dust filters. All this to keep the temperatures inside the housing as low as possible.
10. **MODERN DESIGN**

MODECOM Volcano Amirani has its own charm. It is a modern case for building a modern gaming computer.



PRACTICAL SOLUTIONS

What else can we find inside MODECOM Amirani? There will definitely be enough space for your favorite games, because there is a lot of space for discs installation. The HDD basket hidden under the PSU tunnel allows you to install two 3.5 "HDD drives. In addition, at the back of the motherboard tray, you can additionally mount 2.5 "SSD / HDD drives. On the other hand, at the top of the tunnel hiding the power supply there is room for two additional 2.5 "SSD / HDD drives or one 3.5" HDD drive.



PRACTICAL SOLUTIONS





READY FOR LIQUID COOLING

If you decide to build your computer based on liquid cooling, MODECOM Amirani also offers this possibility.

In MODECOM Amirani you can install 240, 280 or 360 mm liquid coolers on the front panel, 240 or 280 mm on the top panel and 120 mm on the rear panel.



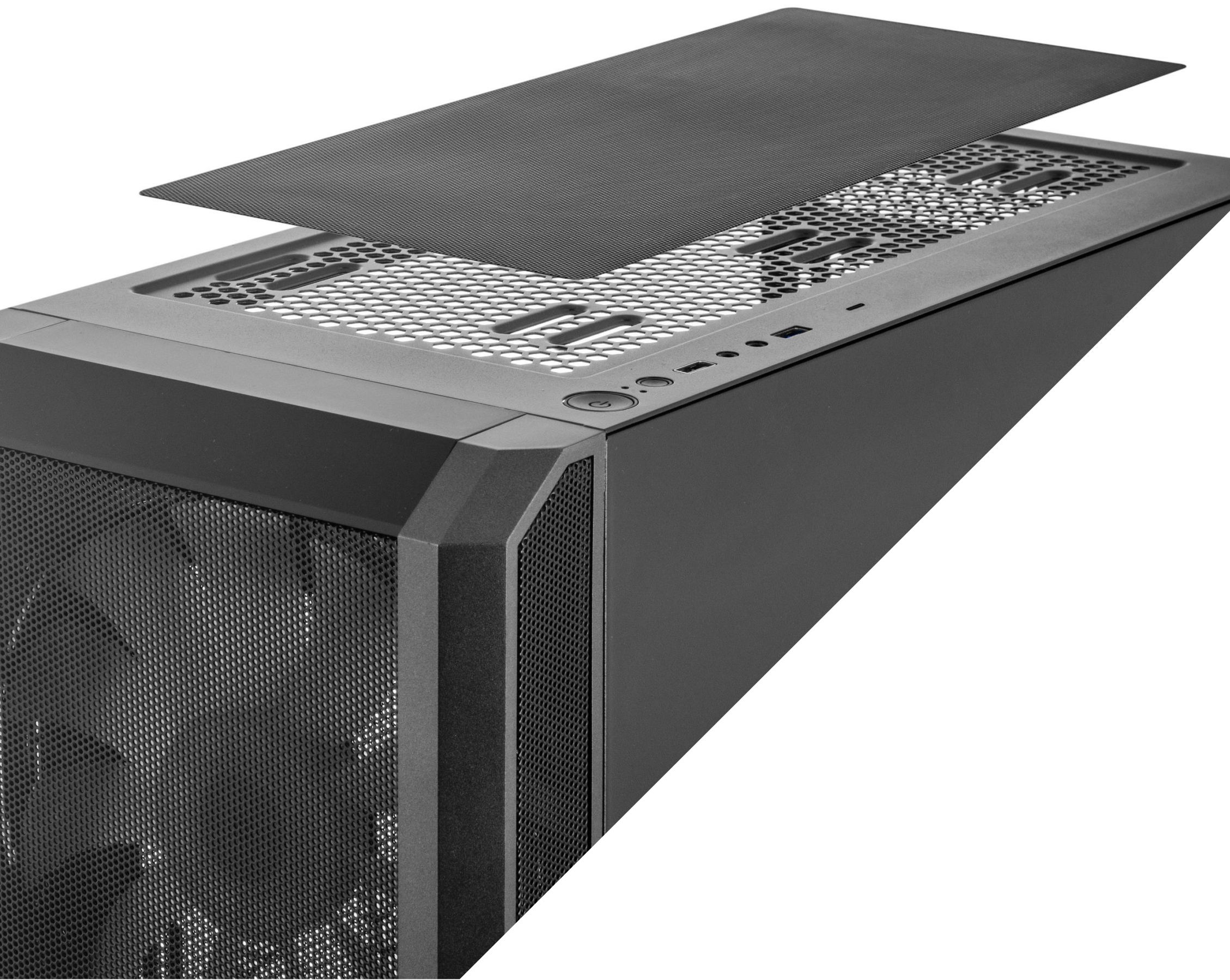
THE GAMING WILL TAKE COLORS

Pre-installed ARGB fans allow you to set the effective illumination of the gaming stand.

Their backlight can be conveniently controlled with the included remote control or from the top panel. The fan controller supports 6 fans equipped with 3 pin ARGB 5V + 3 Pin connectors (pre-installed fans are also equipped with such connectors).

Your gaming stand can look even better thanks to the effective RGB backlight.





AIRFLOW

Good airflow is provided by the front panel made of mesh. Moreover, there are also additional vents around it, which only supports the intake of cool air from the outside. Both the front and top of the housing are equipped with easy-to-clean magnetic air filters. At the bottom, there is a slide-in filter on almost the entire surface of the bottom panel.



PCIe BRACKETS WITH SCREWS AND VERTICAL GPU MOUNTING



All PCIe brackets are with screws and can be easily removed. Gamers will also appreciate the possibility of vertical mounting of a graphics card up to 380 mm long. Special frame enabling the card to be placed vertically is included.



TOP PANEL

The top panel of the case is equipped with two USB 3.0 ports and one USB type C port. In addition, there are audio ports, a switch and a button to control the backlight of the fans.

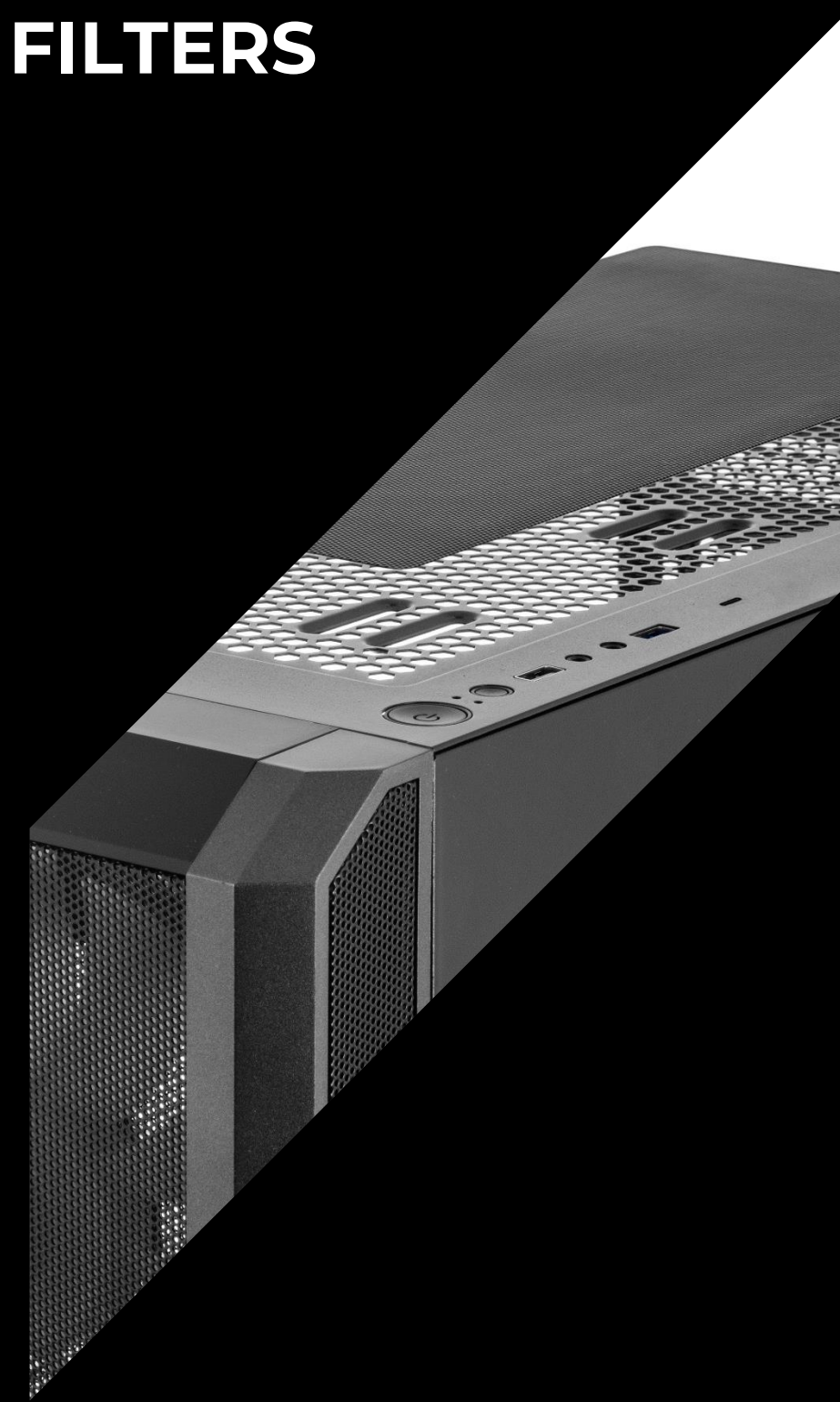
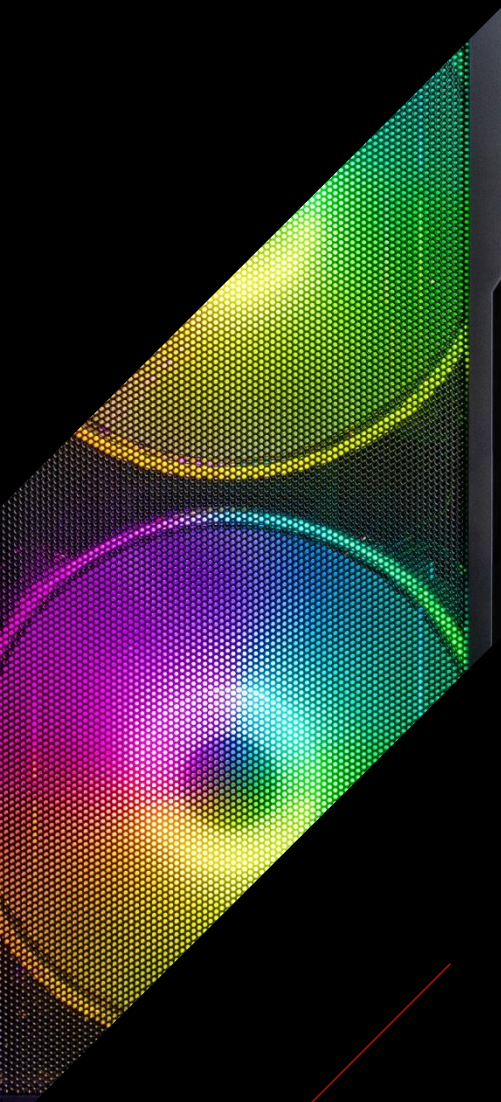


MESH AND ANTI-DUST FILTERS

WHITE OR
BLACK



ARGB
FANS



PRACTICAL
SOLUTIONS



AMIRANI

Fans	Yes, ARGB
PC case standard	ATX





Model

VOLCANO AMIRANI

PC case

Midi tower

Recommended for

Gaming

Dimensions:

455*205*475 mm (L*W*H)

Motherboard standard

ATX/ Micro ATX/ ITX

Ports on the front/top panel::

- | | |
|---------------------|----------------|
| • USB 3.0 | 2 |
| • USB Typ C | 1 |
| • Microphone output | YES |
| • Headphones input | YES / HD AUDIO |

Drive bays:

- | | |
|-------------------|-----|
| • inside HDD 3,5" | 2/3 |
| • inside SSD 2,5" | 2/4 |

Model

VOLCANO AMIRANI



Number of pre-mounted fans:

- Front 2 x 200 mm
- Back 1 x 120 mm

Fan(s) velocity control YES

Place for extension cards 7

Space for power supply Bottom of the case

Tunnel for power supply unit YES

Height of CPU cooling 165 mm

Maximum height of video card 380 mm

Additional information:

- possibility of mounting water cooling system YES
- side panel with a window YES (tempered glass)
- filter under the power supply unit YES
- filter on the top panel YES
- filter on the front panel YES
- chassis thickness 0,8 mm
- net weight 8,23 kg

LOGISTICS

01

EAN (Black): 5901885243405

EAN (White): 5901885245584

02

Product code (Black): AT-AMIRANI-PG-10-000000-0002

Product code (White): AT-AMIRANI-PG-20-000000-0002

03

Dimensions of the collective package:

04

Number of pieces in the collective package: 1

