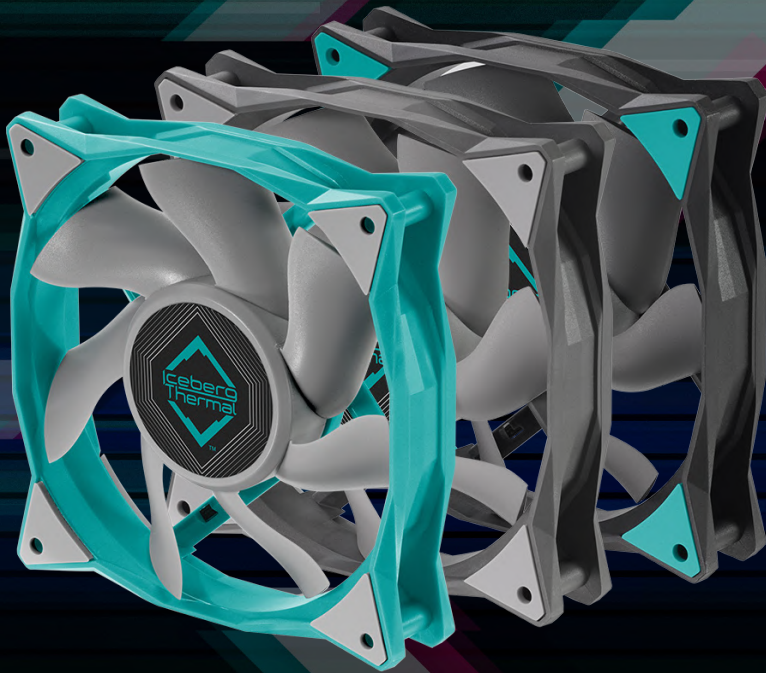




PREMIUM AERODYNAMIC FAN

IceGALE® Xtra 120 mm



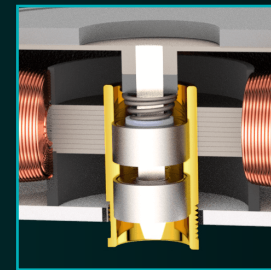
Available in 80 mm, 120 mm, and 140 mm

- Higher Range RPM = More Airflow
- PWM
- Auto START and STOP Feature:
The Fan is Silent, Until Duty Cycle Reaches 21% Loading
- Dual Ball Bearing
- Rigid Brass Housing to Ensure Stability
- Balanced Against Two-Planes



Specifications

Available Color	Teal / Gray / Black
Dimensions	120 (L) x 120 (W) x 25 (H) mm
Connector	4-pin PWM
Bearing	Dual Ball Bearing
Speed	500 - 3000 RPM
Airflow	127 CFM
Noise Level	0 - 44 dBA (with Auto START/STOP)
Static Pressure	4.6 mm H ₂ O
Voltage / Current	12 V / 0.54 A
MTTF	> 160,000 hours
Manufacturer Warranty	6-Year
Box Content	IceGALE® Xtra 120 mm x 1 / Screw x 4



Dual Ball Bearing



Rigid Brass Housing