



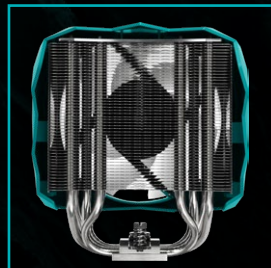
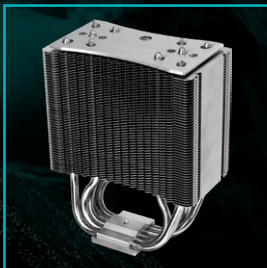
PIPE ARCHITECTURE WITH SWEEPING CURVES INCREASE PERFORMANCE

# IceSLEET® X5



## Features a 120 mm PWM Fan

- 5 Tuned Copper Heat Pipes
- Compatible with Intel/AMD
- Vivid ARGB Lighting
- Auto START and STOP Feature:  
The Fan is Silent, Until Duty Cycle Reaches 21% Loading
- Complete Bond Soldering Between Fin Sheets
- Copper Base Fully Covers the Chipset
- Nickel Plate Finishing



## Specifications

### General

Max TDP	160 W
RAM Clearance	Infinite
Heatpipe	Ø 6 mm x 5
Heatsink	Aluminum Fins x 49, Thickness 0.4 mm, Copper Base
Surface Finishing	Nickel-plated
Thermal Compound	FUZEIce® Plus (0.8 g)
Dimensions	115 (L) x 146 (W) x 159 (H) mm
Weight	852 g
Socket Support	Intel LGA 1700, 1200, 2066, 115X, 2011-0, 2011-3 (Square ILM), 1366, 775 AMD AM5, AM4, AM3(+), AM2(+), FM2(+), FM1
Manufacturer Warranty	2-Year

### Lighting

Type	Addressable RGB
Connector	3-pin Addressable RGB Connector
Voltage / Current	5 V / 0.3 A

### Fan

Size	120 mm x 1
Speed	500 - 1850 RPM
Airflow	76 CFM
Static Pressure	2.8 mm H <sub>2</sub> O
Voltage / Current	12 V / 0.2 A
Bearing	Fluid Dynamic Bearing
Noise Level	0 - 36 dBA (with Auto START/STOP)
Connector	4-pin PWM
MTTF	> 150,000 hours

### Box Content

