

Portable

Canvio Advance

Secured in Style. Take Life Anywhere.



4 2 1
TB TB TB

Color



EMEA Region, Toshiba Storage Solutions – The Canvio Advance is a solid storage solution for anyone who wants quality and style at great value. Up to 4 TB of high-performance storage is packed into a stylish casing. It comes in four different colors to match personal preferences. As a real value add, it includes a backup software package and easy-to-configure security software to keep your data safe.



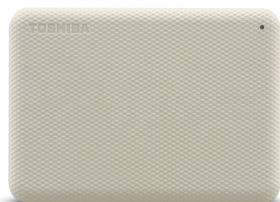
- ? 2.5" external hard drive
- ? Textured finish
- ? SuperSpeed USB 3.2 Gen 1
- ? USB-powered
- ? Auto-backup software
- ? Toshiba Storage Security Software

Manual

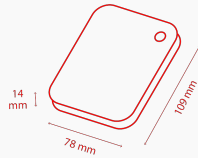
[Canvio-Advance_UM.pdf](#) ?

Tools

[ToshibaStorageDiagnosticTool_1.30.8920.zip](#) ?



Product Specifications



Basic Specifications

Interface	USB 3.2 Gen 1 (USB 2.0 compatible)
Max. transfer rate	~ 5.0 Gbit/s
File system	NTFS (for MS Windows) Requires reformatting for Mac OS
Power	USB bus power (max. 900mA)
System requirements	Formatted NTFS for Microsoft® Windows® 11, Windows® 10, Windows® 8.1, One free port of USB 3.2 Gen 1 or USB 2.0 Requires reformatting for macOS v12.0.1 / v11.5.2 / v11.5 / v11.2 / v10.15 / v10.14 / v10.13 / v10.12

Box Content

Box Content	Canvio Advance USB 3.2 Gen 1 Cable (Type A to Micro-B) User's manual (pre-installed on the hard drive)
--------------------	--------------------------------------------------------------------------------------------------------------

Physical

Weight (approx.)	1 TB, 2 TB: 149 g 4 TB: 217,5 g
Dimensions	1 TB, 2 TB: 78 x 109 x 14 mm 4 TB: 109 x 78 x 19 mm

Enclosure	Textured finish
------------------	-----------------

Features

Password lock software	Toshiba Storage Security Software (for download)
Backup Software	Toshiba Storage Backup Software (for download)

Product Range

Part number	Capacity	Color
HDTCA40EK3CA	4 TB	Black
HDTCA40EW3CA	4 TB	Light beige
HDTCA40ER3CA	4 TB	Red
HDTCA40EG3CA	4 TB	Green
HDTCA20EK3AA	2 TB	Black
HDTCA20EW3AA	2 TB	Light beige
HDTCA20ER3AA	2 TB	Red
HDTCA20EG3AA	2 TB	Green
HDTCA10EK3AA	1 TB	Black
HDTCA10EW3AA	1 TB	Light beige
HDTCA10ER3AA	1 TB	Red
HDTCA10EG3AA	1 TB	Green

Logistical Information:

Box dimensions	111 x 38 x 141
Box weight (gross)	227 g (1 TB / 2 TB); 300 g (4 TB)
Master carton dimensions	123 x 205 x 165 mm
Box weight (gross)	1,27 kg (1 TB / 2 TB); 1,63 kg (4 TB)
Boxes per master carton	5
Pallet dimensions	1150 x 1150 x 130 mm
Pallet weight (net)	22 kg
Units per pallet	1350

Contact

Toshiba Electronics Europe GmbH

Hansaallee 181
40549 Düsseldorf
Germany