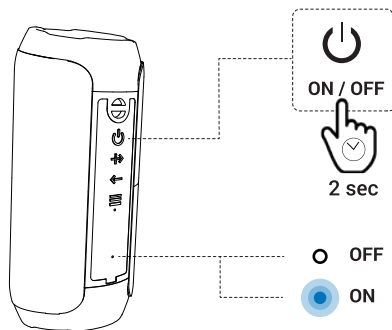


# START HERE

## urban box2.

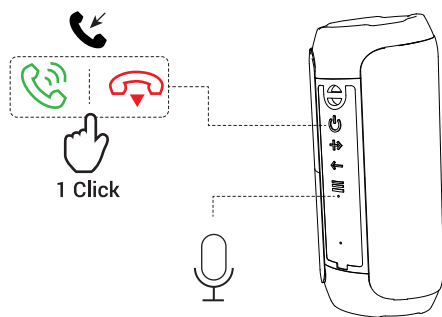
Guía rápida. Quick guide. Guide rapide. Guia rápida.

- 3** Encendido y apagado. Switching on and off the device.  
Allumer et éteindre. Ligar e desligar o dispositivo.



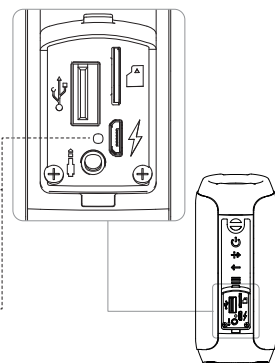
- 6** Responder llamadas. Answering calls.  
Répondre aux appels. Atender chamadas.

**Bluetooth**

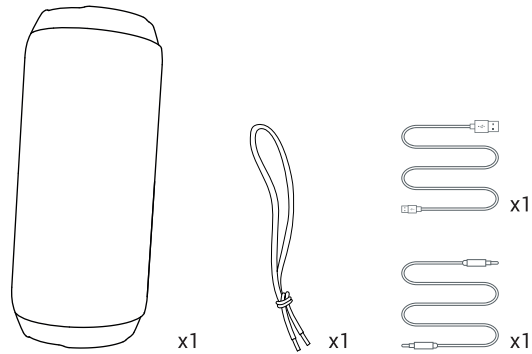


- 9** Batería. Battery. Batterie. Bateria.

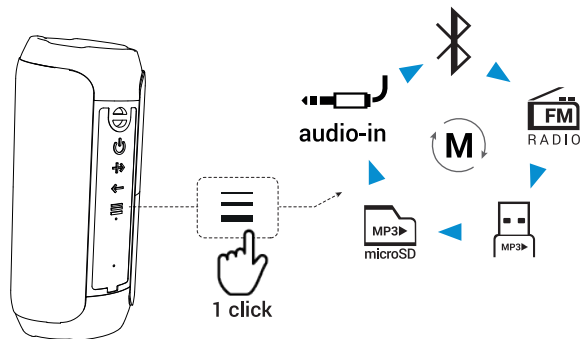
- 1** 10%
- 2**
- 3**



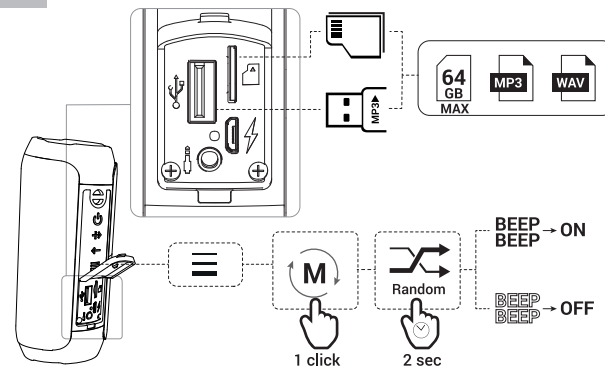
- 1** Contenido. Content. Contenu. Conteúdo.



- 4** Modos de reproducción. Playback modes.  
Modes de lecture. Modos de reprodução.

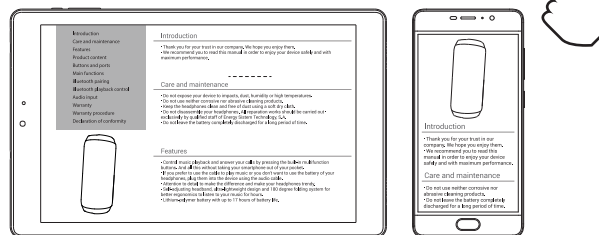


- 7** Otras entradas. Other inputs. Ports disponibles. Outras entradas.  
**microSD/ USB**

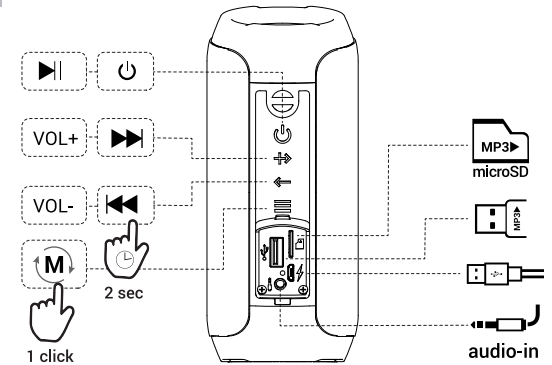


- 10** Mucho más en. Find out more in. Trouver plus dans.  
Mais informações em.

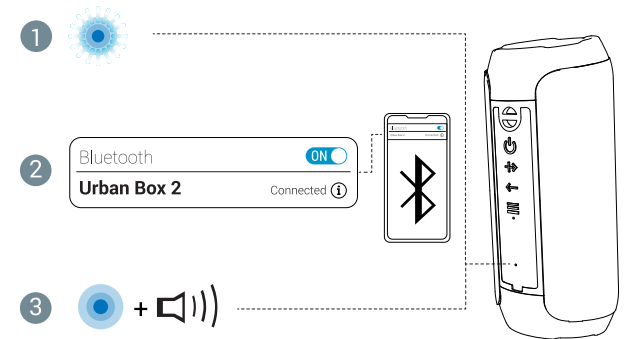
<https://manuals.energysystem.com/guide/44932>



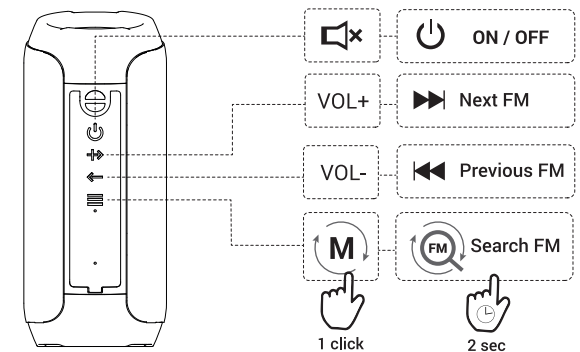
- 2** Presentación general. General overview.  
Présentation générale. Apresentação geral.



- 5** Sincronización. Synchronisation. Synchronisation. Sincronização.  
**Bluetooth**



- 8** Sintonización. Tuning. Recherche de stations. Pesquisa de estações.  
**FM Radio**



**My music**

Descarga la aplicación y reproduce el mejor sonido personalizado para tu dispositivo Energy.  
Download the app and get your Energy device to play the best customized sound ever.

